

C6orf106 Antibody

Rabbit Polyclonal

Antigen Affinity Purified

Protein ID NP_077270.1

Catalog No. A304-602A

GeneID 64771

Lot No. A304-602A-1



APPLICATIONS WB, IP

SPECIES REACTIVITY Human, Mouse

AMOUNT 100 µl

CONCENTRATION 1000 µg/ml

STORAGE/SHELF LIFE 2 - 8° C / 1 year from date of receipt

PHYSICAL STATE Liquid

BUFFER Tris-citrate/phosphate buffer, pH 7 to 8 containing 0.09% Sodium Azide

ISOTYPE IgG

ORIGIN USA

PRODUCTION PROCEDURES Antibody was affinity purified using an epitope specific to C6orf106 immobilized on solid support.

The epitope recognized by A304-602A maps to a region between residue 248 to 298 of human Chromosome 6 Open Reading Frame 106 using the numbering given in entry NP_077270.1 (GeneID 64771).

Antibody concentration was determined by extinction coefficient: absorbance at 280 nm of 1.4 equals 1.0 mg of IgG.

APPLICATIONS Centrifuge tube to remove product from lid. Optimal working dilutions should be determined experimentally by the investigator. Prepare working dilution immediately before use.

Western Blot 1:1,000 - 1:5,000

Immunoprecipitation 2 - 10 µg/mg lysate

APPLICATION NOTES Western blot of immunoprecipitates performed using Normal Pig Serum (Cat. No. S100-020), Goat anti-Rabbit Light Chain HRP Conjugate (Cat. No. A120-113P) and 4-20% SDS-PAGE (link to IP-western blot protocol in Additional Info section below).

Western blot of lysates performed using standard western blot reagents and 4-20% SDS-PAGE.

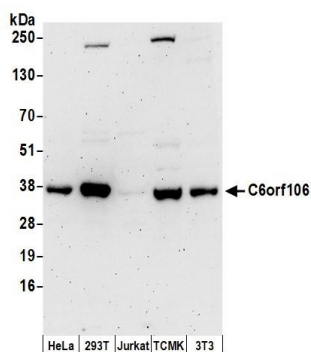
ADDITIONAL INFO <https://www.bethyl.com/product/A304-602A>

Use the link above to view SDS, a current list of citations, and other product specific information.

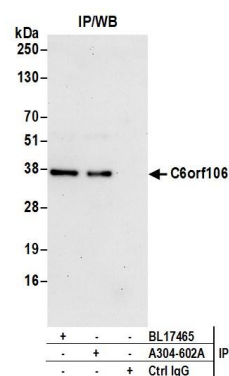
IP-western blot protocol: https://www.bethyl.com/content/protocol_IP_WB

This document certifies that this product has met all of the quality control standards defined by Bethyl Laboratories, Inc.
Eric McIntush, PhD | Chief Scientific Officer

Date: June 21, 2019



Detection of human and mouse C6orf106 by western blot. *Samples:* Whole cell lysate (50 µg) from HeLa, HEK293T, Jurkat, mouse TCMK-1, and mouse NIH 3T3 cells prepared using NETN lysis buffer. *Antibodies:* Affinity purified rabbit anti-C6orf106 antibody A304-602A (lot A304-602A-1) used for WB at 0.4 µg/ml. *Detection:* Chemiluminescence with an exposure time of 3 minutes.



Detection of human C6orf106 by western blot of immunoprecipitates. *Samples:* Whole cell lysate (0.5 or 1.0 mg per IP reaction; 20% of IP loaded) from 293T cells prepared using NETN lysis buffer. *Antibodies:* Affinity purified rabbit anti-C6orf106 antibody A304-602A (lot A304-602A-1) used for IP at 6 µg per reaction. C6orf106 was also immunoprecipitated by rabbit anti-C6orf106 antibody BL17465. For blotting immunoprecipitated C6orf106, A304-602A was used at 1 µg/ml. *Detection:* Chemiluminescence with an exposure time of 30 seconds.