

# Junctophilin 1 Antibody

Rabbit Polyclonal

Antigen Affinity Purified

Protein ID NP\_065698.1

Catalog No. A304-593A

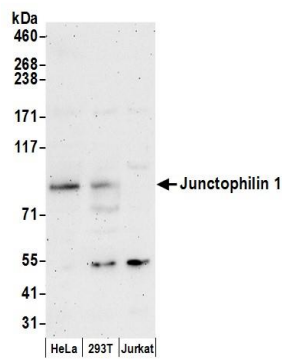
GeneID 56704

Lot No. A304-593A-1

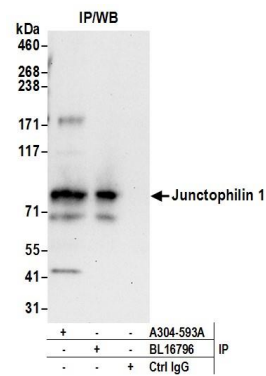


APPLICATIONS	WB, IP
SPECIES REACTIVITY	Human
AMOUNT	100 µl
CONCENTRATION	1000 µg/ml
STORAGE/SHELF LIFE	2 – 8° C / 1 year from date of receipt
PHYSICAL STATE	Liquid
BUFFER	Tris-citrate/phosphate buffer, pH 7 to 8 containing 0.09% Sodium Azide
ISOTYPE	IgG
ORIGIN	USA
PRODUCTION PROCEDURES	<p>Antibody was affinity purified using an epitope specific to Junctophilin 1 immobilized on solid support.</p> <p>The epitope recognized by A304-593A maps to a region between residue 450 to 500 of human Junctophilin 1 using the numbering given in entry NP_065698.1 (GeneID 56704).</p> <p>Antibody concentration was determined by extinction coefficient: absorbance at 280 nm of 1.4 equals 1.0 mg of IgG.</p>
APPLICATIONS	<p>Centrifuge tube to remove product from lid. Optimal working dilutions should be determined experimentally by the investigator. Prepare working dilution immediately before use.</p> <p>Western Blot 1:2,000 – 1:10,000</p> <p>Immunoprecipitation 2 – 10 µg/mg lysate</p>
APPLICATION NOTES	<p>Western blot of immunoprecipitates performed using Normal Pig Serum (Cat. No. S100-020), Goat anti-Rabbit Light Chain HRP Conjugate (Cat. No. A120-113P) and 4-8% SDS-PAGE (link to IP-western blot protocol in Additional Info section below).</p> <p>Western blot of lysates performed using standard western blot reagents and 4-8% SDS-PAGE.</p>
ADDITIONAL INFO	<p><a href="https://www.bethyl.com/product/A304-593A">https://www.bethyl.com/product/A304-593A</a></p> <p>Use the link above to view SDS, a current list of citations, and other product specific information.</p> <p>IP-western blot protocol: <a href="https://www.bethyl.com/content/protocol_IP_WB">https://www.bethyl.com/content/protocol_IP_WB</a></p>

This document certifies that this product has met all of the quality control standards defined by Bethyl Laboratories, Inc.  
Eric McIntush, PhD | Chief Scientific Officer Date: June 21, 2019



**Detection of human Junctophilin 1 by western blot.**  
*Samples:* Whole cell lysate (50 µg) from HeLa, HEK293T, and Jurkat cells prepared using RIPA lysis buffer.  
*Antibodies:* Affinity purified rabbit anti-Junctophilin 1 antibody A304-593A (lot A304-593A-1) used for WB at 0.1 µg/ml. *Detection:* Chemiluminescence with an exposure time of 3 minutes.



**Detection of human Junctophilin 1 by western blot of immunoprecipitates.** *Samples:* Whole cell lysate (0.5 or 1.0 mg per IP reaction; 20% of IP loaded) from 293T cells prepared using RIPA lysis buffer. *Antibodies:* Affinity purified rabbit anti-Junctophilin 1 antibody A304-593A (lot A304-593A-1) used for IP at 6 µg per reaction. Junctophilin 1 was also immunoprecipitated by rabbit anti-Junctophilin 1 antibody BL16796. For blotting immunoprecipitated Junctophilin 1, A304-593A was used at 1 µg/ml. *Detection:* Chemiluminescence with an exposure time of 30 seconds.