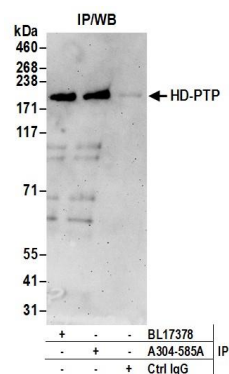


Detection of human HD-PTP by western blot. *Samples:* Whole cell lysate (50 µg) from HeLa, HEK293T, and Jurkat cells prepared using NETN lysis buffer. *Antibodies:* Affinity purified rabbit anti-HD-PTP antibody A304-585A (lot A304-585A-1) used for WB at 0.1 µg/ml. *Detection:* Chemiluminescence with an exposure time of 30 seconds.



Detection of human HD-PTP by western blot of immunoprecipitates. *Samples:* Whole cell lysate (0.5 or 1.0 mg per IP reaction; 20% of IP loaded) from HeLa cells prepared using NETN lysis buffer. *Antibodies:* Affinity purified rabbit anti-HD-PTP antibody A304-585A (lot A304-585A-1) used for IP at 6 µg per reaction. HD-PTP was also immunoprecipitated by rabbit anti-HD-PTP antibody BL17378. For blotting immunoprecipitated HD-PTP, A304-585A was used at 1 µg/ml. *Detection:* Chemiluminescence with an exposure time of 3 minutes.