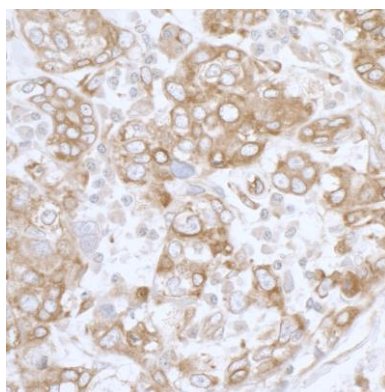


#### Detection of human and mouse PGRMC1 by western blot.

**Samples:** Whole cell lysate (50 µg) from HeLa, HEK293T, Jurkat, mouse TCMK-1, and mouse NIH 3T3 cells prepared using NETN and RIPA lysis buffer. **Antibodies:** Affinity purified rabbit anti-PGRMC1 antibody A304-561A (lot A304-561A-1) used for WB at 0.4 µg/ml. **Detection:** Chemiluminescence with an exposure time of 30 seconds.

#### Detection of human PGRMC1 by western blot of immunoprecipitates.

**Samples:** Whole cell lysate (0.5 or 1.0 mg per IP reaction; 20% of IP loaded) from 293T cells prepared using RIPA lysis buffer. **Antibodies:** Affinity purified rabbit anti-PGRMC1 antibody A304-561A (lot A304-561A-1) used for IP at 6 µg per reaction. PGRMC1 was also immunoprecipitated by rabbit anti-PGRMC1 antibody BL17082. For blotting immunoprecipitated PGRMC1, A304-561A was used at 1 µg/ml. **Detection:** Chemiluminescence with an exposure time of 30 seconds.



#### Detection of human PGRMC1 by immunohistochemistry.

**Sample:** FFPE section of human breast carcinoma.

**Antibody:** Affinity purified rabbit anti-PGRMC1 (Cat. No. A304-561A Lot1) used at a dilution of 1:5,000 (0.2 µg/ml).

**Detection:** DAB