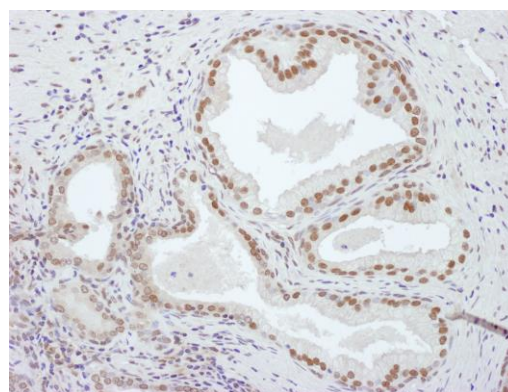


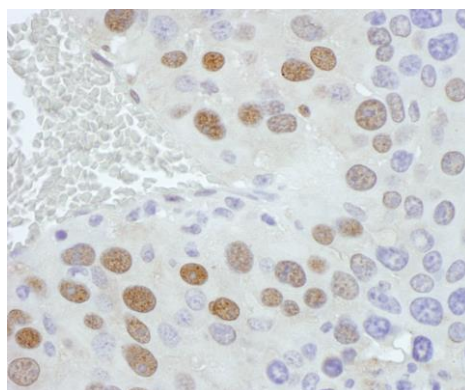
Detection of human and mouse PCYT1A by western blot.

Samples: Whole cell lysate (50 µg) from HeLa, HEK293T, Jurkat, mouse TCMK-1, and mouse NIH 3T3 cells prepared using NETN lysis buffer. *Antibodies:* Affinity purified rabbit anti-PCYT1A antibody A304-558A (lot A304-558A-1) used for WB at 0.1 µg/ml. *Detection:* Chemiluminescence with an exposure time of 3 minutes.



Detection of human PCYT1A by immunohistochemistry.

Sample: FFPE section of human prostate carcinoma. *Antibody:* Affinity purified rabbit anti-PCYT1A (Cat. No. A304-558A Lot1) used at a dilution of 1:1,000 (1 µg/ml). *Detection:* DAB. *Counterstain:* IHC Hematoxylin (blue).



Detection of mouse PCYT1A by immunohistochemistry.

Sample: FFPE section of mouse renal cell carcinoma. *Antibody:* Affinity purified rabbit anti-PCYT1A (Cat. No. A304-558A Lot1) used at a dilution of 1:1,000 (1 µg/ml). *Detection:* DAB