

ARS2 Antibody

Rabbit Polyclonal

Antigen Affinity Purified

Protein ID NP_056992.4

Catalog No. A304-551A

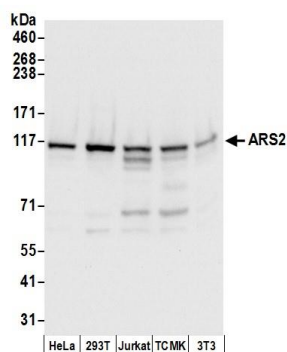
GeneID 51593

Lot No. A304-551A-1



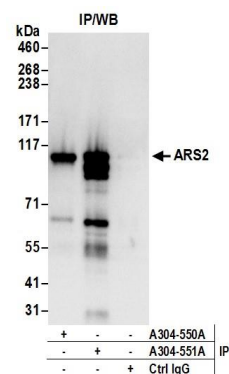
APPLICATIONS	WB, IP, IHC						
SPECIES REACTIVITY	Human, Mouse						
PRESUMED REACTIVITY	Based on 100% sequence identity, this antibody is predicted to react with Zebrafish, <i>X. laevis</i> , Bovine and Orangutan						
AMOUNT	100 µl						
CONCENTRATION	1000 µg/ml						
STORAGE/SHELF LIFE	2 – 8° C / 1 year from date of receipt						
PHYSICAL STATE	Liquid						
BUFFER	Tris-citrate/phosphate buffer, pH 7 to 8 containing 0.09% Sodium Azide						
ISOTYPE	IgG						
ORIGIN	USA						
PRODUCTION PROCEDURES	<p>Antibody was affinity purified using an epitope specific to ARS2 immobilized on solid support.</p> <p>The epitope recognized by A304-551A maps to a region between residue 826 to 876 of human Arsenate Resistance Protein 2 using the numbering given in entry NP_056992.4 (GeneID 51593).</p> <p>Antibody concentration was determined by extinction coefficient: absorbance at 280 nm of 1.4 equals 1.0 mg of IgG.</p>						
APPLICATIONS	<p>Centrifuge tube to remove product from lid. Optimal working dilutions should be determined experimentally by the investigator. Prepare working dilution immediately before use.</p> <table><tr><td>Western Blot</td><td>1:2,000 – 1:10,000</td></tr><tr><td>Immunoprecipitation</td><td>2 – 10 µg/mg lysate</td></tr><tr><td>Immunohistochemistry</td><td>1:1,000 – 1:5,000. Epitope retrieval with citrate buffer pH 6.0 is recommended for FFPE tissue sections.</td></tr></table>	Western Blot	1:2,000 – 1:10,000	Immunoprecipitation	2 – 10 µg/mg lysate	Immunohistochemistry	1:1,000 – 1:5,000. Epitope retrieval with citrate buffer pH 6.0 is recommended for FFPE tissue sections.
Western Blot	1:2,000 – 1:10,000						
Immunoprecipitation	2 – 10 µg/mg lysate						
Immunohistochemistry	1:1,000 – 1:5,000. Epitope retrieval with citrate buffer pH 6.0 is recommended for FFPE tissue sections.						
APPLICATION NOTES	<p>Western blot of immunoprecipitates performed using Normal Pig Serum (Cat. No. S100-020), Goat anti-Rabbit Light Chain HRP Conjugate (Cat. No. A120-113P) and 4-8% SDS-PAGE (link to IP-western blot protocol in Additional Info section below).</p> <p>Western blot of lysates performed using standard western blot reagents and 4-8% SDS-PAGE.</p>						
IHC HUMAN CONTROLS	Breast, Breast Carcinoma, Ovarian Carcinoma, Prostate Carcinoma, Testicular Seminoma						
IHC MOUSE CONTROLS	Teratoma						
ADDITIONAL INFO	<p>https://www.bethyl.com/product/A304-551A</p> <p>Use the link above to view SDS, a current list of citations, and other product specific information. IP-western blot protocol: https://www.bethyl.com/content/protocol_IP_WB</p>						

This document certifies that this product has met all of the quality control standards defined by Bethyl Laboratories, Inc.
Eric McIntush, PhD | Chief Scientific Officer Date: June 21, 2019



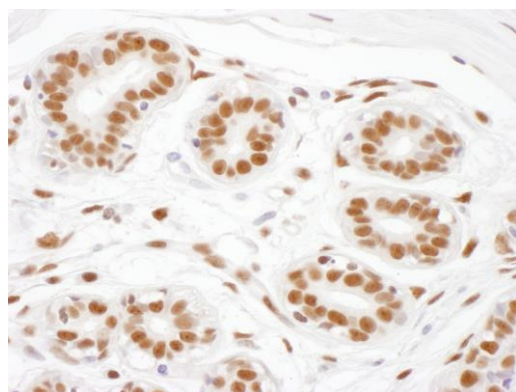
Detection of human and mouse ARS2 by western blot.

Samples: Whole cell lysate (50 µg) from HeLa, HEK293T, Jurkat, mouse TCMK-1, and mouse NIH 3T3 cells prepared using NETN lysis buffer. *Antibodies:* Affinity purified rabbit anti-ARS2 antibody A304-551A (lot A304-551A-1) used for WB at 0.1 µg/ml. *Detection:* Chemiluminescence with an exposure time of 3 seconds.



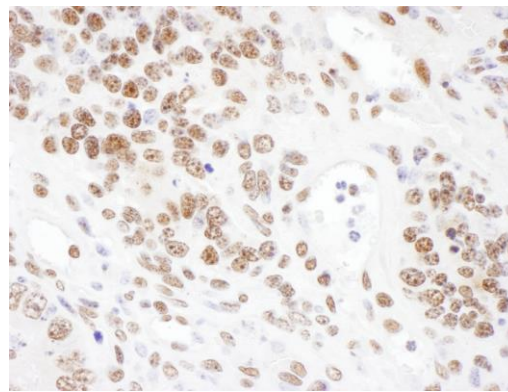
Detection of human ARS2 by western blot of immunoprecipitates.

Samples: Whole cell lysate (0.5 or 1.0 mg per IP reaction; 20% of IP loaded) from Jurkat cells prepared using NETN lysis buffer. *Antibodies:* Affinity purified rabbit anti-ARS2 antibody A304-551A (lot A304-551A-1) used for IP at 6 µg per reaction. ARS2 was also immunoprecipitated by rabbit anti-ARS2 antibody A304-550A. For blotting immunoprecipitated ARS2, A304-551A was used at 1 µg/ml. *Detection:* Chemiluminescence with an exposure time of 3 seconds.



Detection of human ARS2 by immunohistochemistry.

Sample: FFPE section of human mammary glands. *Antibody:* Affinity purified rabbit anti-ARS2 (Cat. No. A304-551A Lot1) used at a dilution of 1:5,000 (0.2 µg/ml). *Detection:* DAB



Detection of mouse ARS2 by immunohistochemistry.

Sample: FFPE section of mouse teratoma. *Antibody:* Affinity purified rabbit anti-ARS2 (Cat. No. A304-551A Lot1) used at a dilution of 1:5,000 (0.2 µg/ml). *Detection:* DAB