

COPB2 Antibody

Rabbit Polyclonal

Antigen Affinity Purified Protein ID NP_004757.1

Catalog No. A304-523A GeneID 9276

Lot No. A304-523A-2

APPLICATIONS	WB, IP, IHC
SPECIES REACTIVITY	Human, Mouse
PRESUMED REACTIVITY	Based on 100% sequence identity, this antibody is predicted to react with Rat, Bovine and Orangutan
AMOUNT	100 µl
CONCENTRATION	1000 µg/ml
STORAGE/SHELF LIFE	2 – 8°C / 1 year from date of receipt
PHYSICAL STATE	Liquid
BUFFER	Tris–citrate/phosphate buffer, pH 7 to 8 containing 0.09% Sodium Azide
ISOTYPE	IgG
ORIGIN	USA

PRODUCTION PROCEDURES Antibody was affinity purified using an epitope specific to COPB2 immobilized on solid support.

The epitope recognized by A304-523A maps to a region between residue 856 to 906 of human Coatmer Protein Complex, Subunit Beta 2 using the numbering given in entry NP_004757.1 (GeneID 9276).

Antibody concentration was determined by extinction coefficient: absorbance at 280 nm of 1.4 equals 1.0 mg of IgG.

APPLICATIONS Centrifuge tube to remove product from lid. Optimal working dilutions should be determined experimentally by the investigator. Prepare working dilution immediately before use.

Western Blot 1:10,000 – 1:25,000

Immunoprecipitation 2 – 10 µg/mg lysate

Immunohistochemistry 1:1,000 to 1:5,000. Epitope retrieval with citrate buffer pH6.0 is recommended for FFPE tissue sections.

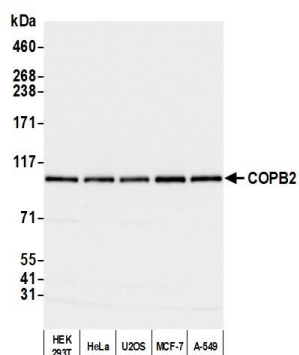
IHC HUMAN CONTROLS Breast Carcinoma, Colon Carcinoma, Ovarian Carcinoma, Prostate Carcinoma

IHC MOUSE CONTROLS Plasmacytoma, Renal Cell Carcinoma

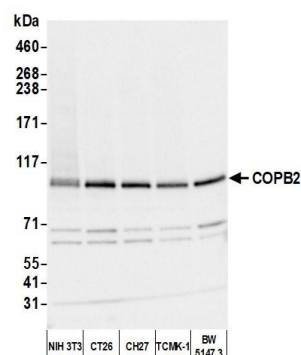
ADDITIONAL INFO <https://www.bethyl.com/product/A304-523A>

Use the link above to view SDS, a current list of citations, and other product specific information. IP–western blot protocol: https://www.bethyl.com/content/protocol_IP_WB

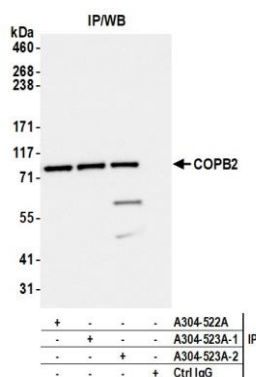
This document certifies that this product has met all of the quality control standards defined by Bethyl Laboratories, Inc.
Michael Spencer, PhD Date: April 25, 2022



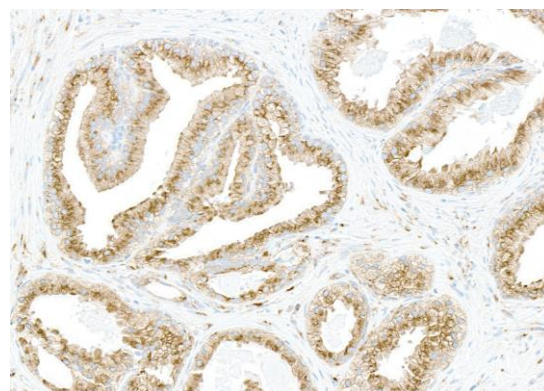
Detection of human COPB2 by western blot. *Samples:* Whole cell lysate (5 μ g) from HEK293T, HeLa, U2OS, MCF-7, and A-549 cells prepared using NETN lysis buffer. *Antibody:* Affinity purified rabbit anti-COPB2 antibody (A304-523A lot 2) used for WB at 0.04 μ g/ml. *Detection:* Chemiluminescence with an exposure time of 1 second.



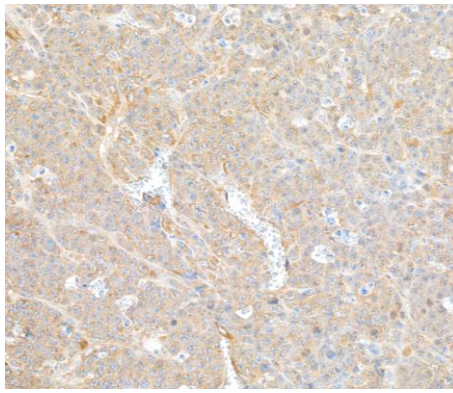
Detection of mouse COPB2 by western blot. *Samples:* Whole cell lysate (5 μ g) from NIH 3T3, CT26, CH27, TCMK-1, and BW5147.3 cells prepared using NETN lysis buffer. *Antibody:* Affinity purified rabbit anti-COPB2 antibody (A304-523A lot 2) used for WB at 0.04 μ g/ml. *Detection:* Chemiluminescence with an exposure time of 1 second.



Detection of human COPB2 by western blot of immunoprecipitates. *Samples:* Whole cell lysate (1.0 mg per IP reaction; 20% of IP loaded) from HEK293T cells prepared using NETN lysis buffer. *Antibodies:* Affinity purified rabbit anti-COPB2 antibody (A304-523A lot 2) used for IP at 6 μ g per reaction. COPB2 was also immunoprecipitated by a previous lot of this antibody (A304-523A lot 1) and a second antibody against a different epitope of COPB2 (A304-522A). For blotting immunoprecipitated COPB2, A304-523A was used at 0.04 μ g/ml. *Detection:* Chemiluminescence with an exposure time of 1 second.



Detection of human COPB2 by immunohistochemistry. *Samples:* FFPE section of human prostate carcinoma. *Antibody:* Affinity purified rabbit anti-COPB2 (A304-522A Lot 2) used at a dilution of 1:5,000 (0.2 μ g/ml). *Detection:* DAB



Detection of mouse COPB2 by immunohistochemistry.

Samples: FFPE section of mouse plasmacytoma. *Antibody:* Affinity purified rabbit anti-COPB2 (A304-522A Lot 2) used at a dilution of 1:1,000 (1 µg/ml). *Detection:* DAB