

# ICLN Antibody

Rabbit Polyclonal

Antigen Affinity Purified

Protein ID NP\_001284.1

Catalog No. A304-521A

GeneID 1207

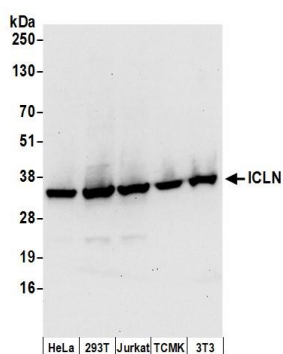
Lot No. A304-521A-1



---

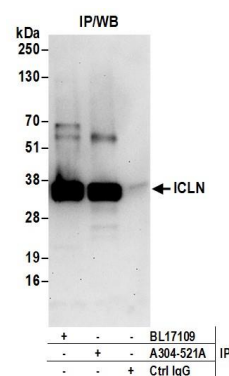
<b>APPLICATIONS</b>	WB, IP, IHC
<b>SPECIES REACTIVITY</b>	Human, Mouse
<b>PRESUMED REACTIVITY</b>	Based on 100% sequence identity, this antibody is predicted to react with Rat, Dog, Rabbit and Orangutan
<b>AMOUNT</b>	100 µl
<b>CONCENTRATION</b>	1000 µg/ml
<b>STORAGE/SHELF LIFE</b>	2 – 8° C / 1 year from date of receipt
<b>PHYSICAL STATE</b>	Liquid
<b>BUFFER</b>	Tris-citrate/phosphate buffer, pH 7 to 8 containing 0.09% Sodium Azide
<b>ISOTYPE</b>	IgG
<b>ORIGIN</b>	USA
<b>PRODUCTION PROCEDURES</b>	Antibody was affinity purified using an epitope specific to ICLN immobilized on solid support.  The epitope recognized by A304-521A maps to a region between residue 187 to 237 of human Chloride Conductance Regulatory Protein ICLN using the numbering given in entry NP_001284.1 (GeneID 1207).  Antibody concentration was determined by extinction coefficient: absorbance at 280 nm of 1.4 equals 1.0 mg of IgG.
<b>APPLICATIONS</b>	Centrifuge tube to remove product from lid. Optimal working dilutions should be determined experimentally by the investigator. Prepare working dilution immediately before use.  Western Blot                    1:2,000 – 1:10,000  Immunoprecipitation       2 – 10 µg/mg lysate  Immunohistochemistry    1:1,000 – 1:5,000. Epitope retrieval with citrate buffer pH 6.0 is recommended for FFPE tissue sections.
<b>APPLICATION NOTES</b>	Western blot of immunoprecipitates performed using Normal Pig Serum (Cat. No. S100-020), Goat anti-Rabbit Light Chain HRP Conjugate (Cat. No. A120-113P) and 4-20% SDS-PAGE (link to IP-western blot protocol in Additional Info section below).  Western blot of lysates performed using standard western blot reagents and 4-20% SDS-PAGE.
<b>IHC HUMAN CONTROLS</b>	Breast Carcinoma, Colon Carcinoma, Ovarian Carcinoma, Prostate Carcinoma
<b>IHC MOUSE CONTROLS</b>	Renal Cell Carcinoma, Teratoma
<b>ADDITIONAL INFO</b>	<a href="https://www.bethyl.com/product/A304-521A">https://www.bethyl.com/product/A304-521A</a> Use the link above to view SDS, a current list of citations, and other product specific information. IP-western blot protocol: <a href="https://www.bethyl.com/content/protocol_IP_WB">https://www.bethyl.com/content/protocol_IP_WB</a>

This document certifies that this product has met all of the quality control standards defined by Bethyl Laboratories, Inc.  
Eric McIntush, PhD | Chief Scientific Officer  
Date: June 21, 2019



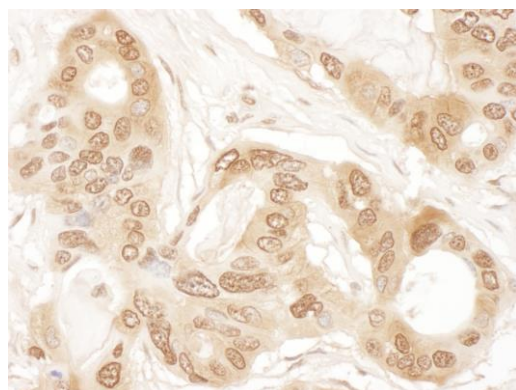
#### Detection of human and mouse ICLN by western blot.

**Samples:** Whole cell lysate (50 µg) from HeLa, HEK293T, Jurkat, mouse TCMK-1, and mouse NIH 3T3 cells prepared using NETN lysis buffer. **Antibodies:** Affinity purified rabbit anti-ICLN antibody A304-521A (lot A304-521A-1) used for WB at 0.1 µg/ml. **Detection:** Chemiluminescence with an exposure time of 30 seconds.



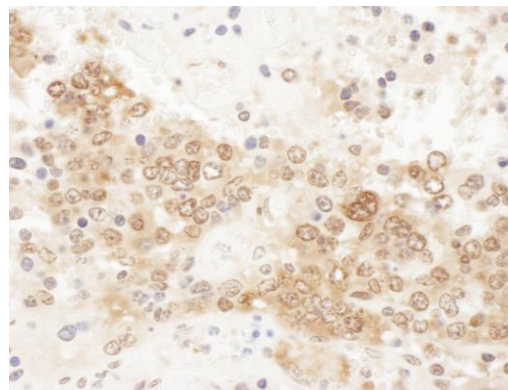
#### Detection of human ICLN by western blot of immunoprecipitates.

**Samples:** Whole cell lysate (0.5 or 1.0 mg per IP reaction; 20% of IP loaded) from 293T cells prepared using NETN lysis buffer. **Antibodies:** Affinity purified rabbit anti-ICLN antibody A304-521A (lot A304-521A-1) used for IP at 6 µg per reaction. ICLN was also immunoprecipitated by rabbit anti-ICLN antibody BL17109. For blotting immunoprecipitated ICLN, A304-521A was used at 1 µg/ml. **Detection:** Chemiluminescence with an exposure time of 30 seconds.



#### Detection of human ICLN by immunohistochemistry.

**Sample:** FFPE section of human ovarian carcinoma. **Antibody:** Affinity purified rabbit anti-ICLN (Cat. No. A304-521A Lot1) used at a dilution of 1:1,000 (1 µg/ml). **Detection:** DAB



#### Detection of mouse ICLN by immunohistochemistry.

**Sample:** FFPE section of mouse teratoma. **Antibody:** Affinity purified rabbit anti-ICLN (Cat. No. A304-521A Lot1) used at a dilution of 1:1,000 (1 µg/ml). **Detection:** DAB