

Drebrin Antibody

Rabbit Polyclonal

Antigen Affinity Purified

Protein ID NP_004386.2

Catalog No. A304-517A

GeneID 1627

Lot No. A304-517A-1



APPLICATIONS	WB, IP, IHC
SPECIES REACTIVITY	Human, Mouse
PRESUMED REACTIVITY	Based on 100% sequence identity, this antibody is predicted to react with Rat
AMOUNT	100 µl
CONCENTRATION	1000 µg/ml
STORAGE/SHELF LIFE	2 - 8° C / 1 year from date of receipt
PHYSICAL STATE	Liquid
BUFFER	Tris-citrate/phosphate buffer, pH 7 to 8 containing 0.09% Sodium Azide
ISOTYPE	IgG
ORIGIN	USA
PRODUCTION PROCEDURES	Antibody was affinity purified using an epitope specific to Drebrin immobilized on solid support.

The epitope recognized by A304-517A maps to a region between residue 599 to 649 of human Developmentally-Regulated Brain Protein using the numbering given in entry NP_004386.2 (GeneID 1627).

Antibody concentration was determined by extinction coefficient: absorbance at 280 nm of 1.4 equals 1.0 mg of IgG.

APPLICATIONS Centrifuge tube to remove product from lid. Optimal working dilutions should be determined experimentally by the investigator. Prepare working dilution immediately before use.

Western Blot 1:2,000 - 1:10,000

Immunoprecipitation 2 - 10 µg/mg lysate

Immunohistochemistry 1:1,000 - 1:5,000. Epitope retrieval with citrate buffer pH 6.0 is recommended for FFPE tissue sections.

APPLICATION NOTES Western blot of immunoprecipitates performed using Normal Pig Serum (Cat. No. S100-020), Goat anti-Rabbit Light Chain HRP Conjugate (Cat. No. A120-113P) and 4-8% SDS-PAGE (link to IP-western blot protocol in Additional Info section below).

Western blot of lysates performed using standard western blot reagents and 4-8% SDS-PAGE.

IHC HUMAN CONTROLS Testicular Seminoma

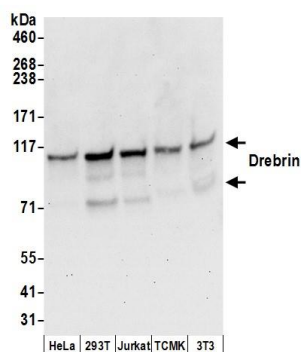
IHC MOUSE CONTROLS Teratoma

ADDITIONAL INFO <https://www.bethyl.com/product/A304-517A>

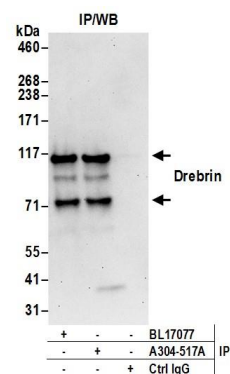
Use the link above to view SDS, a current list of citations, and other product specific information.

IP-western blot protocol: https://www.bethyl.com/content/protocol_IP_WB

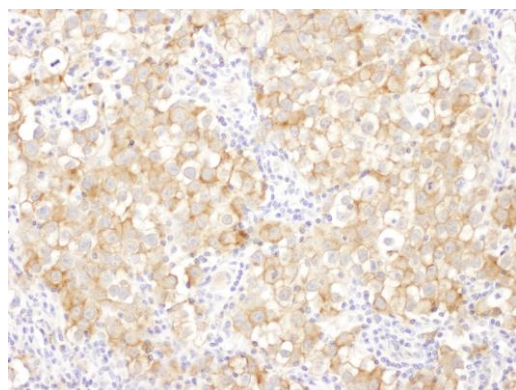
This document certifies that this product has met all of the quality control standards defined by Bethyl Laboratories, Inc.
Eric McIntush, PhD | Chief Scientific Officer Date: June 21, 2019



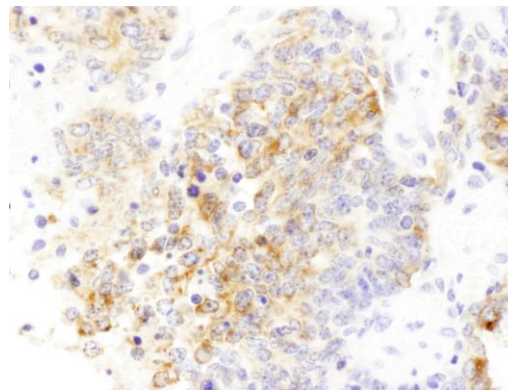
Detection of human and mouse Drebrin by western blot.
Samples: Whole cell lysate (50 µg) from HeLa, HEK293T, Jurkat, mouse TCMK-1, and mouse NIH 3T3 cells prepared using NETN lysis buffer. *Antibodies:* Affinity purified rabbit anti-Drebrin antibody A304-517A (lot A304-517A-1) used for WB at 0.1 µg/ml. *Detection:* Chemiluminescence with an exposure time of 30 seconds.



Detection of human Drebrin by western blot of immunoprecipitates.
Samples: Whole cell lysate (0.5 or 1.0 mg per IP reaction; 20% of IP loaded) from 293T cells prepared using NETN lysis buffer. *Antibodies:* Affinity purified rabbit anti-Drebrin antibody A304-517A (lot A304-517A-1) used for IP at 6 µg per reaction. Drebrin was also immunoprecipitated by rabbit anti-Drebrin antibody BL17077. For blotting immunoprecipitated Drebrin, A304-517A was used at 1 µg/ml. *Detection:* Chemiluminescence with an exposure time of 30 seconds.



Detection of human Drebrin by immunohistochemistry.
Sample: FFPE section of human ovarian carcinoma. *Antibody:* Affinity purified rabbit anti-Drebrin (Cat. No. A304-517A Lot1) used at a dilution of 1:1,000 (1 µg/ml). *Detection:* DAB



Detection of mouse Drebrin by immunohistochemistry.
Sample: FFPE section of mouse teratoma. *Antibody:* Affinity purified rabbit anti-Drebrin (Cat. No. A304-517A Lot1) used at a dilution of 1:1,000 (1 µg/ml). *Detection:* DAB