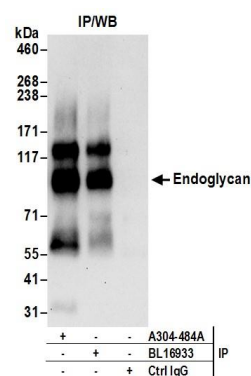


**Detection of human Endoglycan by western blot.** *Samples:* Whole cell lysate (50  $\mu$ g) from HeLa, HEK293T, and Jurkat cells prepared using RIPA lysis buffer. *Antibodies:* Affinity purified rabbit anti-Endoglycan antibody A304-484A (lot A304-484A-1) used for WB at 1  $\mu$ g/ml. *Detection:* Chemiluminescence with an exposure time of 30 seconds.



**Detection of human Endoglycan by western blot of immunoprecipitates.** *Samples:* Whole cell lysate (0.5 or 1.0 mg per IP reaction; 20% of IP loaded) from HeLa cells prepared using RIPA lysis buffer. *Antibodies:* Affinity purified rabbit anti-Endoglycan antibody A304-484A (lot A304-484A-1) used for IP at 6  $\mu$ g per reaction. Endoglycan was also immunoprecipitated by rabbit anti-Endoglycan antibody BL16933. For blotting immunoprecipitated Endoglycan, A304-484A was used at 1  $\mu$ g/ml. *Detection:* Chemiluminescence with an exposure time of 30 seconds.