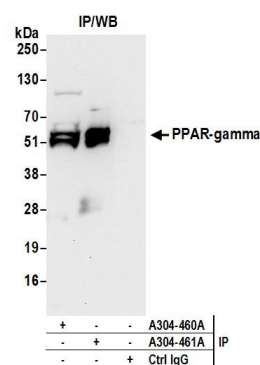


#### Detection of mouse PPAR-gamma by western blot.

*Samples:* Whole cell lysate (50 µg) from HeLa, HEK293T, Jurkat, differentiated mouse NIH 3T3-L1, and mouse NIH3T3-L1 cells prepared using NETN lysis buffer.

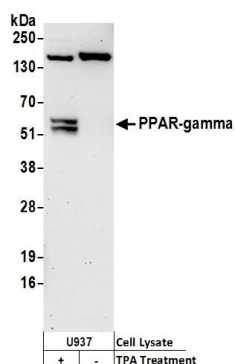
*Antibodies:* Affinity purified rabbit anti-PPAR-gamma antibody A304-460A (lot A304-460A-1) used for WB at 0.04 µg/ml. *Detection:* Chemiluminescence with an exposure time of 75 seconds.



#### Detection of mouse PPAR-gamma by western blot of immunoprecipitates.

*Samples:* Whole cell lysate (0.5 or 1.0 mg per IP reaction; 20% of IP loaded) from differentiated mouse NIH 3T3-L1 cells prepared using NETN lysis buffer.

*Antibodies:* Affinity purified rabbit anti-PPAR-gamma antibody A304-460A (lot A304-460A-1) used for IP at 6 µg per reaction. PPAR-gamma was also immunoprecipitated by rabbit anti-PPAR-gamma antibody A304-461A. For blotting immunoprecipitated PPAR-gamma, A304-460A was used at 0.1 µg/ml. *Detection:* Chemiluminescence with an exposure time of 30 seconds.



#### Detection of human PPAR-gamma by western blot.

*Samples:* Whole cell lysate (50 µg) from U937 cells incubated with (+) or without (-) TPA (200nM, 72 hrs) and lysed using NETN lysis buffer. *Antibodies:* Affinity purified rabbit anti-PPAR-gamma antibody A304-460A (lot A304-460A-1) used for WB at 0.1 µg/ml. *Detection:* Chemiluminescence with an exposure time of 75 seconds.