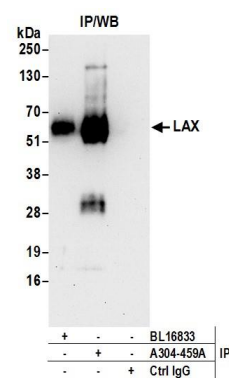


**Detection of human LAX by western blot.** *Samples:* Whole cell lysate (50  $\mu$ g) prepared using RIPA buffer from HeLa, HEK293T, and Jurkat cells. *Antibodies:* Affinity purified rabbit anti-LAX antibody A304-459A (lot A304-459A-1) used for WB at 0.1  $\mu$ g/ml. *Detection:* Chemiluminescence with an exposure time of 30 seconds.



**Detection of human LAX by western blot of immunoprecipitates.** *Samples:* Whole cell lysate (1 mg for IP; 20% of IP loaded) prepared using RIPA buffer from Jurkat cells. *Antibodies:* Affinity purified rabbit anti-LAX antibody A304-459A (lot A304-459A-1) used for IP at 6  $\mu$ g per reaction. LAX was also immunoprecipitated by rabbit anti-LAX antibody BL16833. For blotting immunoprecipitated LAX, A304-459A was used at 1  $\mu$ g/ml. *Detection:* Chemiluminescence with an exposure time of 30 seconds.