

# LAS1L Antibody

Rabbit Polyclonal

Antigen Affinity Purified

Protein ID NP\_112483.1

Catalog No. A304-438A

GeneID 81887

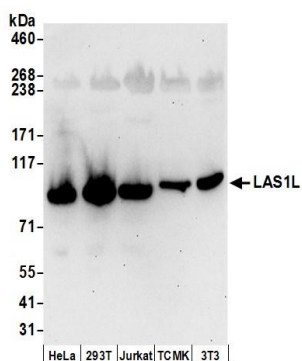
Lot No. A304-438A-1



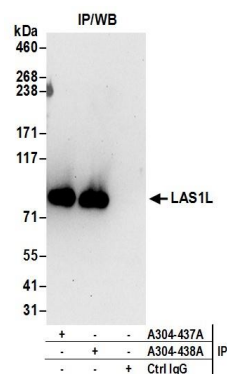
<b>APPLICATIONS</b>	WB, IP, IHC
<b>SPECIES REACTIVITY</b>	Human, Mouse
<b>AMOUNT</b>	100 µl
<b>CONCENTRATION</b>	1000 µg/ml
<b>STORAGE/SHELF LIFE</b>	2 - 8° C / 1 year from date of receipt
<b>PHYSICAL STATE</b>	Liquid
<b>BUFFER</b>	Tris-citrate/phosphate buffer, pH 7 to 8 containing 0.09% Sodium Azide
<b>ISOTYPE</b>	IgG
<b>ORIGIN</b>	USA
<b>PRODUCTION PROCEDURES</b>	<p>Antibody was affinity purified using an epitope specific to LAS1L immobilized on solid support.</p> <p>The epitope recognized by A304-438A maps to a region between residue 684 to 734 of human LAS1-Like using the numbering given in entry NP_112483.1 (GeneID 81887).</p> <p>Antibody concentration was determined by extinction coefficient: absorbance at 280 nm of 1.4 equals 1.0 mg of IgG.</p>
<b>APPLICATIONS</b>	<p>Centrifuge tube to remove product from lid. Optimal working dilutions should be determined experimentally by the investigator. Prepare working dilution immediately before use.</p> <p>Western Blot 1:2,000 - 1:10,000</p> <p>Immunoprecipitation 2 - 10 µg/mg lysate</p> <p>Immunohistochemistry 1:500 - 1:2,000. Epitope retrieval with citrate buffer pH 6.0 is recommended for FFPE tissue sections.</p>
<b>APPLICATION NOTES</b>	<p>Western blot of immunoprecipitates performed using Normal Pig Serum (Cat. No. S100-020), Goat anti-Rabbit Light Chain HRP Conjugate (Cat. No. A120-113P) and 4-8% SDS-PAGE (link to IP-western blot protocol in Additional Info section below).</p> <p>Western blot of lysates performed using standard western blot reagents and 4-8% SDS-PAGE.</p>
<b>IHC HUMAN CONTROLS</b>	Testicular Seminoma
<b>IHC MOUSE CONTROLS</b>	Plasmacytoma
<b>ADDITIONAL INFO</b>	<p><a href="https://www.bethyl.com/product/A304-438A">https://www.bethyl.com/product/A304-438A</a></p> <p>Use the link above to view SDS, a current list of citations, and other product specific information. IP-western blot protocol: <a href="https://www.bethyl.com/content/protocol_IP_WB">https://www.bethyl.com/content/protocol_IP_WB</a></p>

This document certifies that this product has met all of the quality control standards defined by Bethyl Laboratories, Inc.  
Eric McIntush, PhD | Chief Scientific Officer

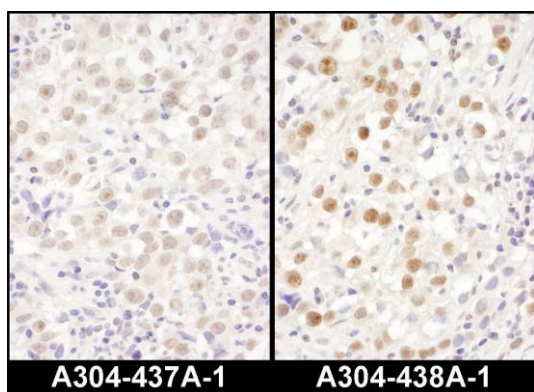
Date: June 21, 2019



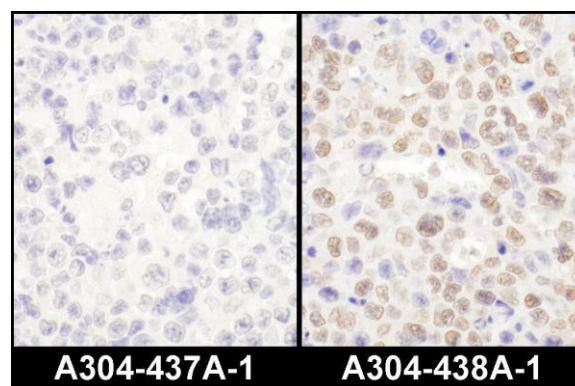
**Detection of human and mouse LAS1L by western blot.**  
*Samples:* Whole cell lysate (50 µg) prepared using NETN buffer from HeLa, HEK293T, Jurkat, mouse TCMK-1, and mouse NIH 3T3 cells. *Antibodies:* Affinity purified rabbit anti-LAS1L antibody A304-438A (lot A304-438A-1) used for WB at 0.1 µg/ml. *Detection:* Chemiluminescence with an exposure time of 30 seconds.



**Detection of human LAS1L by western blot of immunoprecipitates.**  
*Samples:* Whole cell lysate (1 mg for IP; 20% of IP loaded) prepared using NETN buffer from 293T cells. *Antibodies:* Affinity purified rabbit anti-LAS1L antibody A304-438A (lot A304-438A-1) used for IP at 6 µg per reaction. LAS1L was also immunoprecipitated by rabbit anti-LAS1L antibody A304-437A. For blotting immunoprecipitated LAS1L, A304-438A was used at 0.4 µg/ml. *Detection:* Chemiluminescence with an exposure time of 30 seconds.



**Detection of human LAS1L by immunohistochemistry.**  
*Samples:* FFPE serial sections of human testicular seminoma. *Antibody:* Affinity purified rabbit anti-LAS1L (Cat. No. A304-437A Lot1, left image and Cat. No. A304-438A Lot1, right image) used at a dilution of 1:1,000 (1 µg/ml). *Detection:* DAB



**Detection of mouse LAS1L by immunohistochemistry.**  
*Samples:* FFPE serial sections of mouse plasmacytoma. *Antibody:* Affinity purified rabbit anti-LAS1L (Cat. No. A304-437A Lot1, left image and Cat. No. A304-438A Lot1, right image) used at a dilution of 1:1,000 (1 µg/ml). *Detection:* DAB