

LAS1L Antibody

Rabbit Polyclonal

Antigen Affinity Purified

Protein ID NP_112483.1

Catalog No. A304-437A

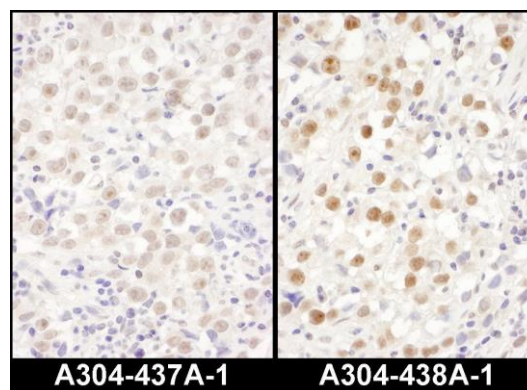
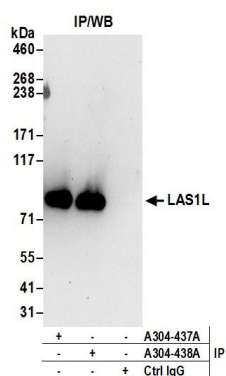
GeneID 81887

Lot No. A304-437A-1



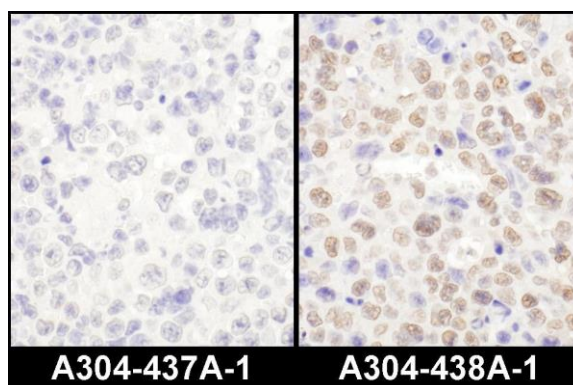
APPLICATIONS	IP, IHC						
SPECIES REACTIVITY	Human						
AMOUNT	100 µl						
CONCENTRATION	1000 µg/ml						
STORAGE/SHELF LIFE	2 - 8° C / 1 year from date of receipt						
PHYSICAL STATE	Liquid						
BUFFER	Tris-citrate/phosphate buffer, pH 7 to 8 containing 0.09% Sodium Azide						
ISOTYPE	IgG						
ORIGIN	USA						
PRODUCTION PROCEDURES	<p>Antibody was affinity purified using an epitope specific to LAS1L immobilized on solid support.</p> <p>The epitope recognized by A304-437A maps to a region between residue 200 to 250 of human LAS1-Like using the numbering given in entry NP_112483.1 (GeneID 81887).</p> <p>Antibody concentration was determined by extinction coefficient: absorbance at 280 nm of 1.4 equals 1.0 mg of IgG.</p>						
APPLICATIONS	<p>Centrifuge tube to remove product from lid. Optimal working dilutions should be determined experimentally by the investigator. Prepare working dilution immediately before use.</p> <table><tr><td>Western Blot</td><td>Not recommended</td></tr><tr><td>Immunoprecipitation</td><td>2 - 10 µg/mg lysate</td></tr><tr><td>Immunohistochemistry</td><td>1:500 - 1:2,000. Epitope retrieval with citrate buffer pH 6.0 is recommended for FFPE tissue sections.</td></tr></table>	Western Blot	Not recommended	Immunoprecipitation	2 - 10 µg/mg lysate	Immunohistochemistry	1:500 - 1:2,000. Epitope retrieval with citrate buffer pH 6.0 is recommended for FFPE tissue sections.
Western Blot	Not recommended						
Immunoprecipitation	2 - 10 µg/mg lysate						
Immunohistochemistry	1:500 - 1:2,000. Epitope retrieval with citrate buffer pH 6.0 is recommended for FFPE tissue sections.						
APPLICATION NOTES	Western blot of immunoprecipitates performed using Normal Pig Serum (Cat. No. S100-020), Goat anti-Rabbit Light Chain HRP Conjugate (Cat. No. A120-113P) and 4-8% SDS-PAGE (link to IP-western blot protocol in Additional Info section below).						
IHC HUMAN CONTROLS	Testicular Seminoma						
ADDITIONAL INFO	<p>https://www.bethyl.com/product/A304-437A</p> <p>Use the link above to view SDS, a current list of citations, and other product specific information.</p> <p>IP-western blot protocol: https://www.bethyl.com/content/protocol_IP_WB</p>						

This document certifies that this product has met all of the quality control standards defined by Bethyl Laboratories, Inc.
Eric McIntush, PhD | Chief Scientific Officer Date: June 21, 2019



Detection of human LAS1L by western blot of immunoprecipitates. *Samples:* Whole cell lysate (1 mg for IP; 20% of IP loaded) prepared using NETN buffer from 293T cells. *Antibodies:* Affinity purified rabbit anti-LAS1L antibody A304-437A (lot A304-437A-1) used for IP at 6 µg per reaction. LAS1L was also immunoprecipitated by rabbit anti-LAS1L antibody A304-438A. For blotting immunoprecipitated LAS1L, A304-438A was used at 0.4 µg/ml. *Detection:* Chemiluminescence with an exposure time of 30 seconds.

Detection of human LAS1L by immunohistochemistry. *Samples:* FFPE serial sections of human testicular seminoma. *Antibody:* Affinity purified rabbit anti- LAS1L (Cat. No. A304-437A Lot1, left image and Cat. No. A304-438A Lot1, right image) used at a dilution of 1:1,000 (1 µg/ml). *Detection:* DAB. *Counterstain:* IHC Hematoxylin (blue).



Detection of mouse LAS1L by immunohistochemistry. *Samples:* FFPE serial sections of mouse plasmacytoma. *Antibody:* Affinity purified rabbit anti- LAS1L (Cat. No. A304-437A Lot1, left image and Cat. No. A304-438A Lot1, right image) used at a dilution of 1:1,000 (1 µg/ml). *Detection:* DAB