

CELSR1 Antibody

Rabbit Polyclonal

Antigen Affinity Purified

Protein ID NP_055061.1

Catalog No. A304-433A

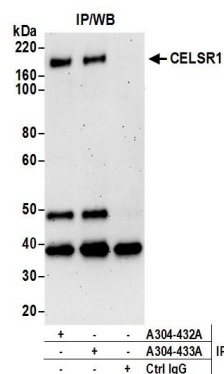
GeneID 9620

Lot No. A304-433A-1



APPLICATIONS	WB, IP
SPECIES REACTIVITY	Human
AMOUNT	100 µl
CONCENTRATION	1000 µg/ml
STORAGE/SHELF LIFE	2 – 8° C / 1 year from date of receipt
PHYSICAL STATE	Liquid
BUFFER	Tris-citrate/phosphate buffer, pH 7 to 8 containing 0.09% Sodium Azide
ISOTYPE	IgG
ORIGIN	USA
PRODUCTION PROCEDURES	<p>Antibody was affinity purified using an epitope specific to CELSR1 immobilized on solid support.</p> <p>The epitope recognized by A304-433A maps to a region between residue 2964 to 3014 of human Cadherin, EGF LAG Seven-Pass G-Type Receptor 1 using the numbering given in entry NP_055061.1 (GeneID 9620).</p> <p>Antibody concentration was determined by extinction coefficient: absorbance at 280 nm of 1.4 equals 1.0 mg of IgG.</p>
APPLICATIONS	<p>Centrifuge tube to remove product from lid. Optimal working dilutions should be determined experimentally by the investigator. Prepare working dilution immediately before use.</p> <p>Western Blot 1:1,000 – 1:5,000</p> <p>Immunoprecipitation 2 – 10 µg/mg lysate</p>
APPLICATION NOTES	<p>Western blot of immunoprecipitates performed using Normal Pig Serum (Cat. No. S100-020), Goat anti-Rabbit Light Chain HRP Conjugate (Cat. No. A120-113P) and 3-8% SDS-PAGE (link to IP-western blot protocol in Additional Info section below).</p> <p>Western blot of lysates performed using standard western blot reagents and 3-8% SDS-PAGE.</p>
ADDITIONAL INFO	<p>https://www.bethyl.com/product/A304-433A</p> <p>Use the link above to view SDS, a current list of citations, and other product specific information.</p> <p>IP-western blot protocol: https://www.bethyl.com/content/protocol_IP_WB</p>

This document certifies that this product has met all of the quality control standards defined by Bethyl Laboratories, Inc.
Eric McIntush, PhD | Chief Scientific Officer Date: June 21, 2019



Detection of human CELSR1 by western blot of immunoprecipitates. *Samples:* Whole cell lysate (1 mg for IP; 20% of IP loaded) prepared using NETN buffer from HeLa cells. *Antibodies:* Affinity purified rabbit anti-CELSR1 antibody A304-433A (lot A304-433A-1) used for IP at 6 µg per reaction. CELSR1 was also immunoprecipitated by rabbit anti-CELSR1 antibody A304-432A. For blotting immunoprecipitated CELSR1, A304-432A was used at 0.4 µg/ml. *Detection:* Chemiluminescence with an exposure time of 3 minutes.