

STIM2 Antibody

Rabbit Polyclonal

Antigen Affinity Purified

Protein ID NP_065911.3

Catalog No. A304-430A

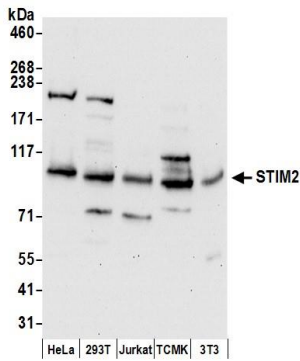
GeneID 57620

Lot No. A304-430A-1

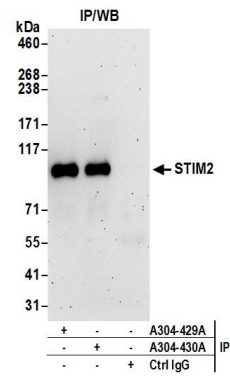


APPLICATIONS	WB, IP				
SPECIES REACTIVITY	Human, Mouse				
AMOUNT	100 µl				
CONCENTRATION	1000 µg/ml				
STORAGE/SHELF LIFE	2 - 8° C / 1 year from date of receipt				
PHYSICAL STATE	Liquid				
BUFFER	Tris-citrate/phosphate buffer, pH 7 to 8 containing 0.09% Sodium Azide				
ISOTYPE	IgG				
ORIGIN	USA				
PRODUCTION PROCEDURES	<p>Antibody was affinity purified using an epitope specific to STIM2 immobilized on solid support.</p> <p>The epitope recognized by A304-430A maps to a region between residue 650 to 700 of human Stromal Interaction Molecule 2 using the numbering given in entry NP_065911.3 (GeneID 57620).</p> <p>Antibody concentration was determined by extinction coefficient: absorbance at 280 nm of 1.4 equals 1.0 mg of IgG.</p>				
APPLICATIONS	<p>Centrifuge tube to remove product from lid. Optimal working dilutions should be determined experimentally by the investigator. Prepare working dilution immediately before use.</p> <table><tr><td>Western Blot</td><td>1:1,000 - 1:5,000</td></tr><tr><td>Immunoprecipitation</td><td>2 - 10 µg/mg lysate</td></tr></table>	Western Blot	1:1,000 - 1:5,000	Immunoprecipitation	2 - 10 µg/mg lysate
Western Blot	1:1,000 - 1:5,000				
Immunoprecipitation	2 - 10 µg/mg lysate				
APPLICATION NOTES	<p>Western blot of immunoprecipitates performed using Normal Pig Serum (Cat. No. S100-020), Goat anti-Rabbit Light Chain HRP Conjugate (Cat. No. A120-113P) and 4-8% SDS-PAGE (link to IP-western blot protocol in Additional Info section below).</p> <p>Western blot of lysates performed using standard western blot reagents and 4-8% SDS-PAGE.</p>				
ADDITIONAL INFO	<p>https://www.bethyl.com/product/A304-430A</p> <p>Use the link above to view SDS, a current list of citations, and other product specific information.</p> <p>IP-western blot protocol: https://www.bethyl.com/content/protocol_IP_WB</p>				

This document certifies that this product has met all of the quality control standards defined by Bethyl Laboratories, Inc.
Eric McIntush, PhD | Chief Scientific Officer Date: June 21, 2019



Detection of human and mouse STIM2 by western blot.
Samples: Whole cell lysate (50 µg) prepared using NETN buffer from HeLa, HEK293T, Jurkat, mouse TCMK-1, and mouse NIH 3T3 cells. *Antibodies:* Affinity purified rabbit anti-STIM2 antibody A304-430A (lot A304-430A-1) used for WB at 0.4 µg/ml. *Detection:* Chemiluminescence with an exposure time of 30 seconds.



Detection of human STIM2 by western blot of immunoprecipitates.
Samples: Whole cell lysate (1 mg for IP; 20% of IP loaded) prepared using NETN buffer from HeLa cells. *Antibodies:* Affinity purified rabbit anti-STIM2 antibody A304-430A (lot A304-430A-1) used for IP at 6 µg per reaction. STIM2 was also immunoprecipitated by rabbit anti-STIM2 antibody A304-429A. For blotting immunoprecipitated STIM2, A304-430A was used at 1 µg/ml. *Detection:* Chemiluminescence with an exposure time of 3 minutes.