

KCC3 Antibody

Rabbit Polyclonal

Antigen Affinity Purified

Protein ID NP_598408.1

Catalog No. A304-410A

GeneID 9990

Lot No. A304-410A-1



APPLICATIONS	IP
SPECIES REACTIVITY	Human
AMOUNT	100 µl
CONCENTRATION	1000 µg/ml
STORAGE/SHELF LIFE	2 – 8° C / 1 year from date of receipt
PHYSICAL STATE	Liquid
BUFFER	Tris-citrate/phosphate buffer, pH 7 to 8 containing 0.09% Sodium Azide
ISOTYPE	IgG
ORIGIN	USA
PRODUCTION PROCEDURES	Antibody was affinity purified using an epitope specific to KCC3 immobilized on solid support.

The epitope recognized by A304-410A maps to a region between residue 75 to 125 of human Potassium Chloride Cotransporter 3 using the numbering given in entry NP_598408.1 (GeneID 9990).

Antibody concentration was determined by extinction coefficient: absorbance at 280 nm of 1.4 equals 1.0 mg of IgG.

APPLICATIONS Centrifuge tube to remove product from lid. Optimal working dilutions should be determined experimentally by the investigator. Prepare working dilution immediately before use.

Western Blot Not recommended

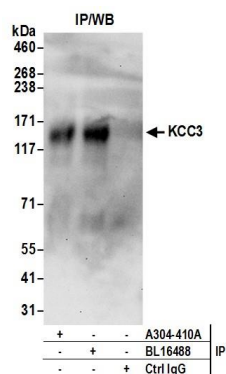
Immunoprecipitation 2 – 10 µg/mg lysate

APPLICATION NOTES Western blot of immunoprecipitates performed using Normal Pig Serum (Cat. No. S100-020), Goat anti-Rabbit Light Chain HRP Conjugate (Cat. No. A120-113P) and 4-8% SDS-PAGE (link to IP-western blot protocol in Additional Info section below).

ADDITIONAL INFO <https://www.bethyl.com/product/A304-410A>

Use the link above to view SDS, a current list of citations, and other product specific information. IP-western blot protocol: https://www.bethyl.com/content/protocol_IP_WB

This document certifies that this product has met all of the quality control standards defined by Bethyl Laboratories, Inc.
Eric McIntush, PhD | Chief Scientific Officer Date: June 21, 2019



Detection of human KCC3 by western blot of immunoprecipitates. *Samples:* Whole cell lysate (1 mg for IP; 20% of IP loaded) prepared using RIPA buffer from Jurkat cells. *Antibodies:* Affinity purified rabbit anti-KCC3 antibody A304-410A (lot A304-410A-1) used for IP at 6 μ g per reaction. KCC3 was also immunoprecipitated by rabbit anti-KCC3 antibody BL16488. For blotting immunoprecipitated KCC3, A304-409A-1 was used at 1 μ g/ml. *Detection:* Chemiluminescence with an exposure time of 30 seconds.