

# Phospho RNA Polymerase II (S5) Antibody

Rabbit Polyclonal

Antigen Affinity Purified

Protein ID NP\_000928.1

Catalog No. A304-408A

GeneID 5430

Lot No. A304-408A-2



<b>APPLICATIONS</b>	WB, IP, IHC
<b>SPECIES REACTIVITY</b>	Human, Mouse
<b>PRESUMED REACTIVITY</b>	Based on 100% sequence identity, this antibody is predicted to react with D. melanogaster
<b>AMOUNT</b>	100 µl
<b>CONCENTRATION</b>	200 µg/ml
<b>STORAGE/SHELF LIFE</b>	2 – 8° C / 1 year from date of receipt
<b>PHYSICAL STATE</b>	Liquid
<b>BUFFER</b>	Tris-citrate/phosphate buffer, pH 7 to 8 containing 0.09% Sodium Azide
<b>ISOTYPE</b>	IgG
<b>ORIGIN</b>	USA
<b>PRODUCTION PROCEDURES</b>	Antibody was affinity purified using an epitope specific to RNA Polymerase II, Phospho (S5) immobilized on solid support.

Immunogen for A304-408A was a phosphorylated synthetic peptide, which represented a portion of human RNA Polymerase II (GeneID 5430) around serine 5 of the C-terminal repeat YSPTSPS. of human RNA Polymerase II using the numbering given in entry NP\_000928.1 (GeneID 5430).

Antibody concentration was determined by extinction coefficient: absorbance at 280 nm of 1.4 equals 1.0 mg of IgG.

**APPLICATIONS** Centrifuge tube to remove product from lid. Optimal working dilutions should be determined experimentally by the investigator. Prepare working dilution immediately before use.

Western Blot	1:2,000 – 1:10,000
Immunoprecipitation	1 – 5 µg/mg lysate
Immunohistochemistry	1:200 – 1:1,000. Epitope retrieval with citrate buffer pH 6.0 is recommended for FFPE tissue sections.

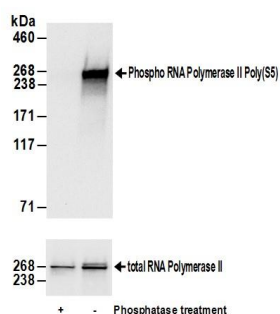
**APPLICATION NOTES** Western blot of immunoprecipitates performed using Normal Pig Serum (Cat. No. S100-020), Goat anti-Rabbit Light Chain HRP Conjugate (Cat. No. A120-113P) and 4-8% SDS-PAGE (link to IP-western blot protocol in Additional Info section below).

**IHC HUMAN CONTROLS** Western blot of lysates performed using standard western blot reagents and 4-8% SDS-PAGE. Breast Carcinoma, Colon Carcinoma, Ovarian Carcinoma, Prostate Carcinoma, Stomach Adenocarcinoma, Testicular Seminoma

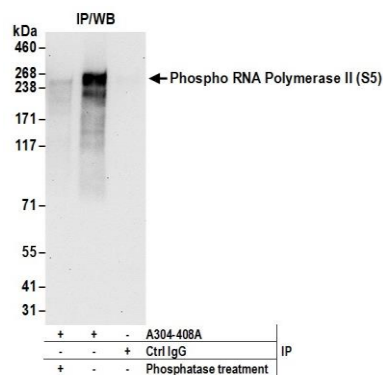
**IHC MOUSE CONTROLS** Renal Cell Carcinoma, Teratoma

**ADDITIONAL INFO** <https://www.bethyl.com/product/A304-408A>  
Use the link above to view SDS, a current list of citations, and other product specific information.  
IP-western blot protocol [https://www.bethyl.com/content/protocol\\_IP\\_WB](https://www.bethyl.com/content/protocol_IP_WB)

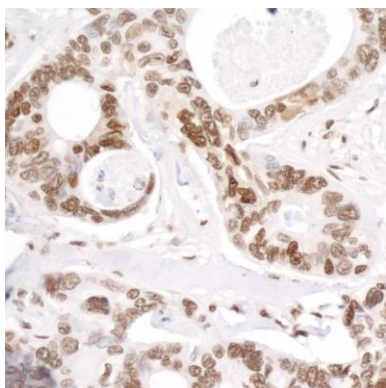
This document certifies that this product has met all of the quality control standards defined by Bethyl Laboratories, Inc.  
Eric McIntush, PhD | Chief Scientific Officer Date: January 13, 2020



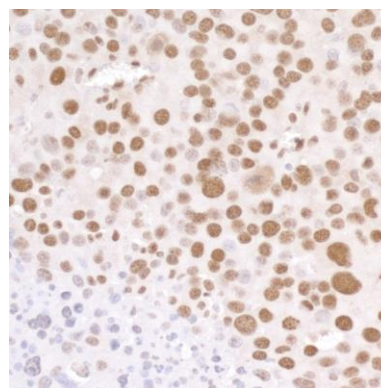
**Detection of human Phospho RNA Polymerase II (S5) by western blot.** *Samples:* Whole cell lysate (50 µg) from HeLa prepared using NETN buffer. Lysate was mock treated (-) or treated with phosphatases (+). *Antibodies:* Affinity purified rabbit anti-Phospho RNA Polymerase II (S5) antibody A304-408A (lot A304-408A-2) was used for WB at 0.02 µg/ml (upper panel). To examine total RNA Polymerase II, rabbit anti-RNA Polymerase II antibody A300-653A was used (lower panel). *Detection:* Chemiluminescence with exposure time of 10 seconds.



**Detection of human Phospho RNA Polymerase II (S5) by western blot of immunoprecipitates.** *Samples:* Whole cell lysate (0.5 or 1.0 mg per IP reaction; 20% of IP loaded) from HeLa cells prepared using NETN lysis buffer. Immunoprecipitates were either phosphatase treated (+) or mock treated (-). *Antibody:* Affinity purified rabbit anti-Phospho RNA Polymerase II (S5) antibody A304-408A (lot A304-408A-2) used for IP at 1 µg per reaction. For blotting immunoprecipitated Phospho RNA Polymerase II (S5), A304-408A was used at 0.02 µg/ml. *Detection:* Chemiluminescence with an exposure time of 30 seconds.



**Detection of human Phospho RNA Polymerase II (S5) by immunohistochemistry.** *Sample:* FFPE section of human ovarian carcinoma. *Antibody:* Affinity purified rabbit anti-Phospho RNA Polymerase II (S5) (Cat. No. A304-408A Lot2) used at a dilution of 1:200 (0.2 µg/ml). *Detection:* DAB



**Detection of mouse Phospho RNA Polymerase II (S5) by immunohistochemistry.** *Sample:* FFPE section of mouse renal cell carcinoma. *Antibody:* Affinity purified rabbit anti-Phospho RNA Polymerase II (S5) (Cat. No. A304-408A Lot2) used at a dilution of 1:200 (0.2 µg/ml). *Detection:* DAB