

Phospho RNA Polymerase II (S2) Antibody

Rabbit Polyclonal

Antigen Affinity Purified

Protein ID NP_000928.1

Catalog No. A304-407A

GeneID 5430

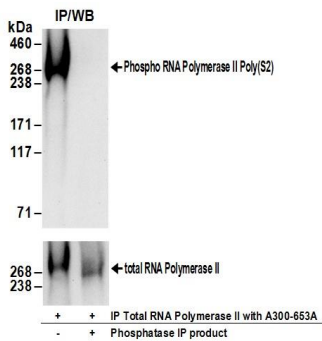
Lot No. A304-407A-1



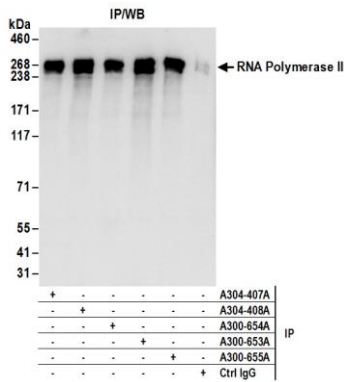
APPLICATIONS	WB, IP, IHC						
SPECIES REACTIVITY	Human, Mouse						
AMOUNT	100 µl						
CONCENTRATION	1000 µg/ml						
STORAGE/SHELF LIFE	2 – 8° C / 1 year from date of receipt						
PHYSICAL STATE	Liquid						
BUFFER	Tris-citrate/phosphate buffer, pH 7 to 8 containing 0.09% Sodium Azide						
ISOTYPE	IgG						
ORIGIN	USA						
PRODUCTION PROCEDURES	<p>Antibody was affinity purified using an epitope specific to RNA Polymerase II, Phospho (S2) immobilized on solid support.</p> <p>Immunogen for A304-407A was a phosphorylated synthetic peptide, which represented a portion of human RNA Polymerase II (GeneID 5430) around serine 2 of the C-terminal repeat YSPTSPS of human RNA Polymerase II using the numbering given in entry NP_000928.1 (GeneID 5430).</p> <p>Antibody concentration was determined by extinction coefficient: absorbance at 280 nm of 1.4 equals 1.0 mg of IgG.</p>						
APPLICATIONS	<p>Centrifuge tube to remove product from lid. Optimal working dilutions should be determined experimentally by the investigator. Prepare working dilution immediately before use.</p> <table><tr><td>Western Blot</td><td>1:500 – 1:2,500</td></tr><tr><td>Immunoprecipitation</td><td>2 – 10 µg/mg lysate</td></tr><tr><td>Immunohistochemistry</td><td>1:2,000 – 1:10,000. Epitope retrieval with citrate buffer pH 6.0 is recommended for FFPE tissue sections.</td></tr></table>	Western Blot	1:500 – 1:2,500	Immunoprecipitation	2 – 10 µg/mg lysate	Immunohistochemistry	1:2,000 – 1:10,000. Epitope retrieval with citrate buffer pH 6.0 is recommended for FFPE tissue sections.
Western Blot	1:500 – 1:2,500						
Immunoprecipitation	2 – 10 µg/mg lysate						
Immunohistochemistry	1:2,000 – 1:10,000. Epitope retrieval with citrate buffer pH 6.0 is recommended for FFPE tissue sections.						
APPLICATION NOTES	<p>Western blot of immunoprecipitates performed using Normal Pig Serum (Cat. No. S100-020), Goat anti-Rabbit Light Chain HRP Conjugate (Cat. No. A120-113P) and 4-8% SDS-PAGE (link to IP-western blot protocol in Additional Info section below).</p> <p>Western blot of lysates performed using standard western blot reagents and 4-8% SDS-PAGE.</p>						
IHC HUMAN CONTROLS	Breast Carcinoma, Colon Carcinoma, Ovarian Carcinoma, Prostate Carcinoma, Stomach Adenocarcinoma, Testicular Seminoma						
IHC MOUSE CONTROLS	Renal Cell Carcinoma, Teratoma						
ADDITIONAL INFO	<p>https://www.bethyl.com/product/A304-407A</p> <p>Use the link above to view SDS, a current list of citations, and other product specific information. IP-western blot protocol https://www.bethyl.com/content/protocol_IP-WB</p>						

This document certifies that this product has met all of the quality control standards defined by Bethyl Laboratories, Inc.
Eric McIntush, PhD | Chief Scientific Officer

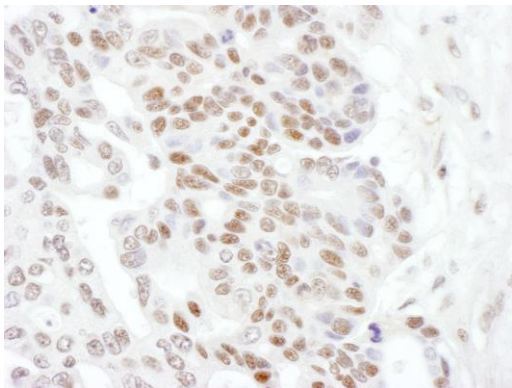
Date: January 13, 2020



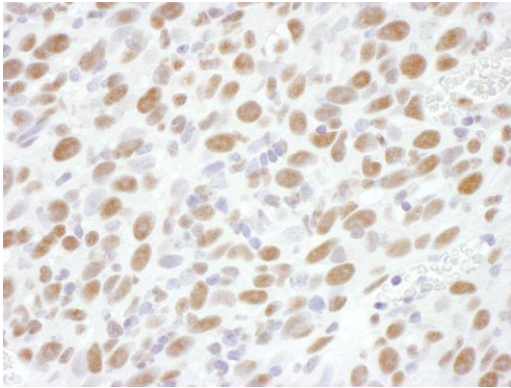
Detection of human Phospho RNA Polymerase II (S2) by western blot of immunoprecipitates. *Samples:* Whole cell lysate (1 mg for IP; 20% of IP loaded) prepared using NETN buffer from 293T cells. *Antibodies:* RNA Polymerase II was immunoprecipitated using rabbit anti-RNA Polymerase II antibody A300-653A. Following immunoprecipitation the product of the IP reaction was mock treated (-) or treated with phosphatases (+). Affinity purified rabbit anti-Phospho RNA Polymerase II (S2) antibody A304-407A was used for WB at 1 µg/ml (upper panel). To examine total RNA Polymerase II, the blot was stripped and then blotted with rabbit anti-RNA Polymerase II antibody A300-653A (lower panel). *Detection:* Chemiluminescence with exposure times of 30 seconds (upper panel) and 15 seconds (lower panel).



Detection of human Phospho RNA Polymerase II (S2) by western blot of immunoprecipitates. *Samples:* Whole cell lysate (1 mg for IP; 20% of IP loaded) prepared using NETN buffer from 293T cells. *Antibodies:* Affinity purified rabbit anti-Phospho RNA Polymerase II (S2) antibody A304-407A (lot A304-407A-1) used for IP at 6 µg per reaction. Phospho RNA Polymerase II was also immunoprecipitated by rabbit anti-Phospho RNA Polymerase II antibodies A304-408A, A300-654A and A300-655A, and rabbit anti-RNA Polymerase II antibody A300-653A. For blotting immunoprecipitated Phospho RNA Polymerase II, A300-653 was used at 1 µg/ml. *Detection:* Chemiluminescence with an exposure time of 3 seconds.



Detection of human Phospho RNA Polymerase II (S2) by immunohistochemistry. *Sample:* FFPE section of human ovarian carcinoma. *Antibody:* Affinity purified rabbit anti-Phospho RNA Polymerase II (S2) (Cat. No. A304-407A Lot1) used at a dilution of 1:5,000 (0.2µg/ml). *Detection:* DAB



Detection of mouse Phospho RNA Polymerase II (S2) by immunohistochemistry. *Sample:* FFPE section of mouse renal cell carcinoma. *Antibody:* Affinity purified rabbit anti- Phospho RNA Polymerase II (S2) (Cat. No. A304-407A Lot1) used at a dilution of 1:5,000 (0.2µg/ml). *Detection:* DAB