

RNA Polymerase II Antibody

Rabbit Polyclonal

Antigen Affinity Purified

Protein ID NP_000928.1

Catalog No. A304-405A

GeneID 5430

Lot No. A304-405A-2



APPLICATIONS IP, ChIP-PCR

SPECIES REACTIVITY Human

PRESUMED REACTIVITY Based on 100% sequence identity, this antibody is predicted to react with Mouse

AMOUNT 100 µl

CONCENTRATION 1000 µg/ml

STORAGE/SHELF LIFE 2 – 8° C / 1 year from date of receipt

PHYSICAL STATE Liquid

BUFFER Tris-citrate/phosphate buffer, pH 7 to 8 containing 0.09% Sodium Azide

ISOTYPE IgG

ORIGIN USA

PRODUCTION PROCEDURES Antibody was affinity purified using an epitope specific to RNA Polymerase II immobilized on solid support.

The epitope recognized by A304-405A maps to a region between residue 754 to 804 of human RNA Polymerase II using the numbering given in entry NP_000928.1 (GeneID 5430).

Antibody concentration was determined by extinction coefficient: absorbance at 280 nm of 1.4 equals 1.0 mg of IgG.

APPLICATIONS Centrifuge tube to remove product from lid. Optimal working dilutions should be determined experimentally by the investigator. Prepare working dilution immediately before use.

Western Blot Not recommended. A304-405A has not performed satisfactorily when used for WB of RNA Polymerase II in crude preparations (e.g. whole cell lysate). This antibody can be used for WB of enriched (e.g. immunoprecipitated) sources of RNA Polymerase II.

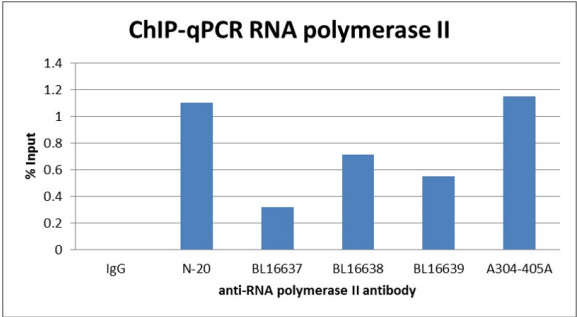
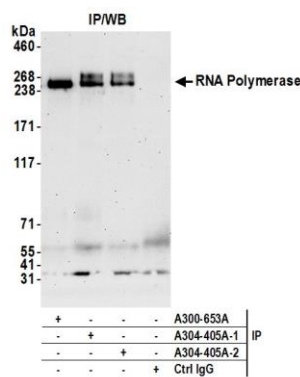
Immunoprecipitation 2 – 10 µg/mg lysate

ChIP-PCR 8 µg per IP

ADDITIONAL INFO <https://www.bethyl.com/product/A304-405A>

Use the link above to view SDS, a current list of citations, and other product specific information.
IP-western blot protocol: https://www.bethyl.com/content/protocol_IP_WB

This document certifies that this product has met all of the quality control standards defined by Bethyl Laboratories, Inc.
Brian McWilliams, PhD Date: May 20, 2021



Detection of human RNA Polymerase II by western blot of immunoprecipitates. *Samples:* Whole cell lysate (1.0 mg per IP reaction; 20% of IP loaded) from HeLa cells prepared using NETN lysis buffer. *Antibodies:* Affinity purified rabbit anti-RNA Polymerase II antibody (A304-405A lot 2) used for IP at 6 µg per reaction. RNA Polymerase II was also immunoprecipitated by a previous lot of this antibody (A304-405A lot 1) and a second antibody against a different epitope of RNA Polymerase II antibody (A300-653A). For blotting immunoprecipitated RNA Polymerase II, A300-653A was used at 1 µg/ml. *Detection:* Chemiluminescence with an exposure time of 75 seconds.

Binding at pause site of the Jun B gene. Chromatin isolated from one 15 cm plate of HeLa cells was immunoprecipitated with 8.0 µg of anti-RNA polymerase II antibodies and PCR amplified. *knerning24*