

FAT1 Antibody

Rabbit Polyclonal

Antigen Affinity Purified

Protein ID NP_005236.2

Catalog No. A304-402A

GeneID 2195

Lot No. A304-402A-3



APPLICATIONS	WB, IP
SPECIES REACTIVITY	Human, Mouse
AMOUNT	100 µl
CONCENTRATION	1000 µg/ml
STORAGE/SHELF LIFE	2 – 8° C / 1 year from date of receipt
PHYSICAL STATE	Liquid
BUFFER	Tris-citrate/phosphate buffer, pH 7 to 8 containing 0.09% Sodium Azide
ISOTYPE	IgG
ORIGIN	USA
PRODUCTION PROCEDURES	Antibody was affinity purified using an epitope specific to FAT1 immobilized on solid support.

The epitope recognized by A304-402A maps to a region between residue 4450 to 4500 of human FAT Tumor Suppressor Homolog 1 using the numbering given in entry NP_005236.2 (GeneID 2195).

Antibody concentration was determined by extinction coefficient: absorbance at 280 nm of 1.4 equals 1.0 mg of IgG.

APPLICATIONS Centrifuge tube to remove product from lid. Optimal working dilutions should be determined experimentally by the investigator. Prepare working dilution immediately before use.

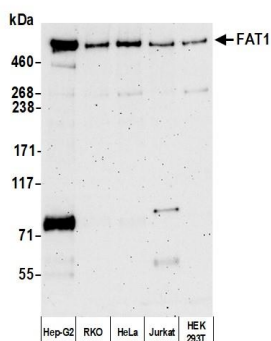
Western Blot 1:2,000 – 1:10,000

Immunoprecipitation 2 – 10 µg/mg lysate

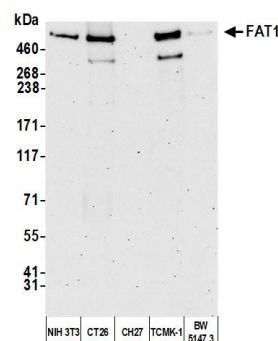
ADDITIONAL INFO <https://www.bethyl.com/product/A304-402A>

Use the link above to view SDS, a current list of citations, and other product specific information.

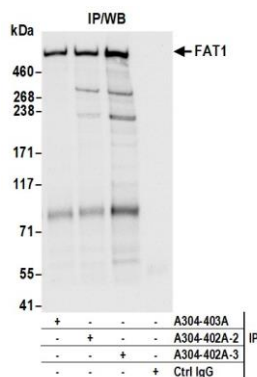
This document certifies that this product has met all of the quality control standards defined by Bethyl Laboratories, Inc.
Brian McWilliams, PhD Date: December 28, 2020



Detection of human FAT1 by western blot. *Samples:* Whole cell lysate (2 µg) from Hep-G2, RKO, HeLa, Jurkat, and HEK293T cells prepared using NETN lysis buffer. *Antibodies:* Affinity purified rabbit anti-FAT1 antibody (A304-402A lot 3) used for WB at 0.04 µg/ml. *Detection:* Chemiluminescence with an exposure time of 3 minutes.



Detection of mouse FAT1 by western blot. *Samples:* Whole cell lysate (2 µg) from NIH 3T3, CT26, CH27, TCMK-1, and BW5147.3 cells prepared using NETN lysis buffer. *Antibodies:* Affinity purified rabbit anti-FAT1 antibody (A304-402A lot 3) used for WB at 0.04 µg/ml. *Detection:* Chemiluminescence with an exposure time of 75 seconds.



Detection of human FAT1 by western blot of immunoprecipitates. *Samples:* Whole cell lysate (1.0 mg per IP reaction; 20% of IP loaded) from HeLa cells prepared using NETN lysis buffer. *Antibodies:* Affinity purified rabbit anti-FAT1 antibody (A304-402A lot 3) used for IP at 6 µg per reaction. FAT1 was also immunoprecipitated by a previous lot of this antibody (A304-403A lot 2) and rabbit anti-FAT1 antibody (A304-403A lot 1). For blotting immunoprecipitated FAT1, A304-402A was used at 0.04 µg/ml. *Detection:* Chemiluminescence with an exposure time of 3 seconds.