

GLUT4 Antibody

Rabbit Polyclonal

Antigen Affinity Purified

Protein ID NP_001033.1

Catalog No. A304-377A

GeneID 6517

Lot No. A304-377A-1



APPLICATIONS	IP
SPECIES REACTIVITY	Human
PRESUMED REACTIVITY	Based on 100% sequence identity, this antibody is predicted to react with Rat and Bovine
AMOUNT	100 µl
CONCENTRATION	1000 µg/ml
STORAGE/SHELF LIFE	2 - 8° C / 1 year from date of receipt
PHYSICAL STATE	Liquid
BUFFER	Tris-citrate/phosphate buffer, pH 7 to 8 containing 0.09% Sodium Azide
ISOTYPE	IgG
ORIGIN	USA
PRODUCTION PROCEDURES	Antibody was affinity purified using an epitope specific to GLUT4 immobilized on solid support.

The epitope recognized by A304-377A maps to a region between residue 1 to 50 of human Glucose Transporter Type 4 using the numbering given in entry NP_001033.1 (GeneID 6517).

Antibody concentration was determined by extinction coefficient: absorbance at 280 nm of 1.4 equals 1.0 mg of IgG.

APPLICATIONS Centrifuge tube to remove product from lid. Optimal working dilutions should be determined experimentally by the investigator. Prepare working dilution immediately before use.

Western Blot Not recommended. A304-377A has not performed satisfactorily when used for WB of GLUT4 in crude preparations (e.g. whole cell lysate). This antibody can be used for WB of enriched (e.g. immunoprecipitated) sources of GLUT4.

Immunoprecipitation 2 - 10 µg/mg lysate

APPLICATION NOTES Western blot of immunoprecipitates performed using Normal Pig Serum (Cat. No. S100-020), Goat anti-Rabbit Light Chain HRP Conjugate (Cat. No. A120-113P) and 4-20% SDS-PAGE (link to IP-western blot protocol in Additional Info section below).

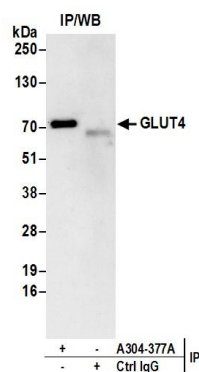
ADDITIONAL INFO <https://www.bethyl.com/product/A304-377A>

Use the link above to view SDS, a current list of citations, and other product specific information.

IP-western blot protocol: https://www.bethyl.com/content/protocol_IP_WB

This document certifies that this product has met all of the quality control standards defined by Bethyl Laboratories, Inc.
Eric McIntush, PhD | Chief Scientific Officer

Date: June 21, 2019



Detection of human GLUT4 by western blot of immunoprecipitates. *Samples:* Whole cell lysate (0.5 or 1.0 mg per IP reaction; 20% of IP loaded) prepared using NETN buffer from Jurkat cells. *Antibodies:* Affinity purified rabbit anti-GLUT4 antibody A304-377A (lot A304-377A-1) used for IP at 6 μ g per reaction. For blotting immunoprecipitated GLUT4, A304-377A was used at 1 μ g/ml. *Detection:* Chemiluminescence with an exposure time of 30 seconds.