

# Selenoprotein S Antibody

Rabbit Polyclonal

Antigen Affinity Purified

Protein ID NP\_982298.1

Catalog No. A304-364A

GeneID 55829

Lot No. A304-364A-1



<b>APPLICATIONS</b>	WB, IP
<b>SPECIES REACTIVITY</b>	Human
<b>AMOUNT</b>	100 µl
<b>CONCENTRATION</b>	1000 µg/ml
<b>STORAGE/SHELF LIFE</b>	2 – 8° C / 1 year from date of receipt
<b>PHYSICAL STATE</b>	Liquid
<b>BUFFER</b>	Tris-citrate/phosphate buffer, pH 7 to 8 containing 0.09% Sodium Azide
<b>ISOTYPE</b>	IgG
<b>ORIGIN</b>	USA
<b>PRODUCTION PROCEDURES</b>	Antibody was affinity purified using an epitope specific to Selenoprotein S immobilized on solid support.

The epitope recognized by A304-364A maps to a region between residue 125 to 175 of human Selenoprotein S using the numbering given in entry NP\_982298.1 (GeneID 55829).

Antibody concentration was determined by extinction coefficient: absorbance at 280 nm of 1.4 equals 1.0 mg of IgG.

**APPLICATIONS** Centrifuge tube to remove product from lid. Optimal working dilutions should be determined experimentally by the investigator. Prepare working dilution immediately before use.

Western Blot 1:1,000 – 1:5,000

Immunoprecipitation 2 – 10 µg/mg lysate

**APPLICATION NOTES** Western blot of immunoprecipitates performed using Normal Pig Serum (Cat. No. S100-020), Goat anti-Rabbit Light Chain HRP Conjugate (Cat. No. A120-113P) and 4-20% SDS-PAGE (link to IP-western blot protocol in Additional Info section below).

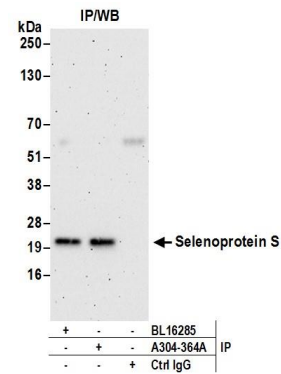
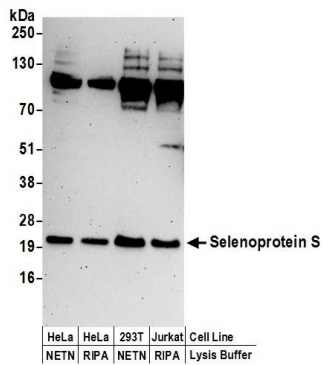
Western blot of lysates performed using standard western blot reagents and 4-20% SDS-PAGE.

**ADDITIONAL INFO** <https://www.bethyl.com/product/A304-364A>

Use the link above to view SDS, a current list of citations, and other product specific information.

IP-western blot protocol: [https://www.bethyl.com/content/protocol\\_IP\\_WB](https://www.bethyl.com/content/protocol_IP_WB)

This document certifies that this product has met all of the quality control standards defined by Bethyl Laboratories, Inc.  
Eric McIntush, PhD | Chief Scientific Officer Date: June 21, 2019



#### Detection of human Selenoprotein S by western blot.

**Samples:** Whole cell lysate (50 µg) prepared using NETN or RIPA buffer from HeLa, HEK293T, and Jurkat cells.

**Antibodies:** Affinity purified rabbit anti-Selenoprotein S antibody A304-364A (lot A304-364A-1) used for WB at 0.4 µg/ml. **Detection:** Chemiluminescence with an exposure time of 3 minutes.

#### Detection of human Selenoprotein S by western blot of immunoprecipitates.

**Samples:** Whole cell lysate (0.5 or 1.0 mg per IP reaction; 20% of IP loaded) prepared using NETN buffer from HeLa cells. **Antibodies:** Affinity purified rabbit anti-Selenoprotein S antibody A304-364A (lot A304-364A-1) used for IP at 6 µg per reaction. Selenoprotein S was also immunoprecipitated by rabbit anti-Selenoprotein S antibody BL16285. For blotting immunoprecipitated Selenoprotein S, A304-364A was used at 1 µg/ml. **Detection:** Chemiluminescence with an exposure time of 3 minutes.