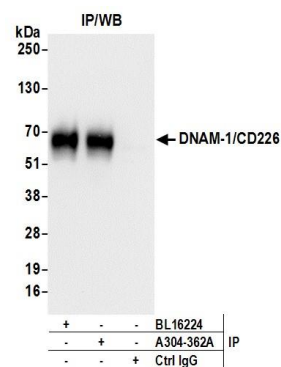


#### Detection of human DNAM-1/CD226 by western blot.

**Samples:** Whole cell lysate (50 µg) prepared using NETN buffer from HeLa, HEK293T, and Jurkat cells. **Antibodies:** Affinity purified rabbit anti-DNAM-1/CD226 antibody A304-362A (lot A304-362A-1) used for WB at 0.1 µg/ml. **Detection:** Chemiluminescence with an exposure time of 3 minutes.



#### Detection of human DNAM-1/CD226 by western blot of immunoprecipitates.

**Samples:** Whole cell lysate (0.5 or 1.0 mg per IP reaction; 20% of IP loaded) prepared using NETN buffer from Jurkat cells. **Antibodies:** Affinity purified rabbit anti-DNAM-1/CD226 antibody A304-362A (lot A304-362A-1) used for IP at 6 µg per reaction. DNAM-1/CD226 was also immunoprecipitated by rabbit anti-DNAM-1/CD226 antibody BL16224. For blotting immunoprecipitated DNAM-1/CD226, A304-362A was used at 1 µg/ml. **Detection:** Chemiluminescence with an exposure time of 30 seconds.