

# CD146 Antibody

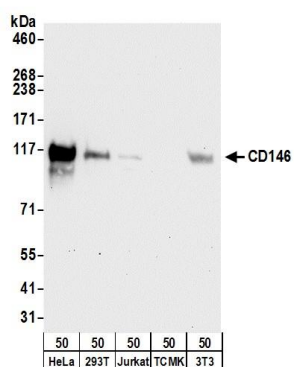
Rabbit Polyclonal

Antigen Affinity Purified Protein ID NP\_006491.2  
Catalog No. A304-335A GeneID 4162  
Lot No. A304-335A-1



<b>APPLICATIONS</b>	WB, IP
<b>SPECIES REACTIVITY</b>	Human, Mouse
<b>AMOUNT</b>	100 µl
<b>CONCENTRATION</b>	1000 µg/ml
<b>STORAGE/SHELF LIFE</b>	2 - 8° C / 1 year from date of receipt
<b>PHYSICAL STATE</b>	Liquid
<b>BUFFER</b>	Tris-citrate/phosphate buffer, pH 7 to 8 containing 0.09% Sodium Azide
<b>ISOTYPE</b>	IgG
<b>ORIGIN</b>	USA
<b>PRODUCTION PROCEDURES</b>	<p>Antibody was affinity purified using an epitope specific to CD146 immobilized on solid support.</p> <p>The epitope recognized by A304-335A maps to a region between residue 600 to 650 of human Melanoma Adhesion Molecule using the numbering given in entry NP_006491.2 (GeneID 4162).</p> <p>Antibody concentration was determined by extinction coefficient: absorbance at 280 nm of 1.4 equals 1.0 mg of IgG.</p>
<b>APPLICATIONS</b>	<p>Centrifuge tube to remove product from lid. Optimal working dilutions should be determined experimentally by the investigator. Prepare working dilution immediately before use.</p> <p>Western Blot 1:2,000 - 1:10,000</p> <p>Immunoprecipitation 2 - 10 µg/mg lysate</p>
<b>APPLICATION NOTES</b>	<p>Western blot of immunoprecipitates performed using Normal Pig Serum (Cat. No. S100-020), Goat anti-Rabbit Light Chain HRP Conjugate (Cat. No. A120-113P) and 4-8% SDS-PAGE (link to IP-western blot protocol in Additional Info section below).</p> <p>Western blot of lysates performed using standard western blot reagents and 4-8% SDS-PAGE.</p>
<b>ADDITIONAL INFO</b>	<p><a href="https://www.bethyl.com/product/A304-335A">https://www.bethyl.com/product/A304-335A</a></p> <p>Use the link above to view SDS, a current list of citations, and other product specific information.</p> <p>IP-western blot protocol: <a href="https://www.bethyl.com/content/protocol_IP_WB">https://www.bethyl.com/content/protocol_IP_WB</a></p>

This document certifies that this product has met all of the quality control standards defined by Bethyl Laboratories, Inc.  
Eric McIntush, PhD | Chief Scientific Officer Date: June 21, 2019

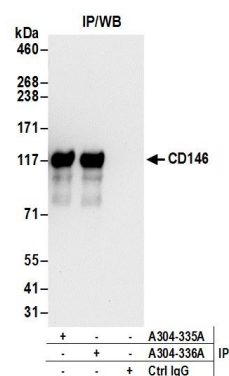


#### Detection of human and mouse CD146 by western blot.

*Samples:* Whole cell lysate (50 µg) from HeLa, HEK293T, Jurkat, mouse TCMK-1, and mouse NIH 3T3 cells.

*Antibodies:* Affinity purified rabbit anti-CD146 antibody A304-335A (lot A304-335A-1) used for WB at 0.1 µg/ml.

*Detection:* Chemiluminescence with an exposure time of 30 seconds.



#### Detection of human CD146 by western blot of immunoprecipitates.

*Samples:* Whole cell lysate (0.5 or 1.0 mg per IP reaction; 20% of IP loaded) from HeLa cells.

*Antibodies:* Affinity purified rabbit anti-CD146 antibody A304-335A (lot A304-335A-1) used for IP at 6 µg per reaction. CD146 was also immunoprecipitated by rabbit anti-CD146 antibody A304-336A. For blotting immunoprecipitated CD146, A304-335A was used at 1 µg/ml. *Detection:* Chemiluminescence with an exposure time of 30 seconds.