

# Rictor Antibody

Rabbit Polyclonal

Antigen Affinity Purified

Protein ID NP\_689969.2

Catalog No. A304-329A

GeneID 253260

Lot No. A304-329A-1



|                           |  |
|---------------------------|--|
| <b>APPLICATIONS</b>       | IP, IHC  |
| <b>SPECIES REACTIVITY</b> | Human  |
| <b>AMOUNT</b>             | 100 µl   |
| <b>CONCENTRATION</b>      | 1000 µg/ml   |
| <b>STORAGE/SHELF LIFE</b> | 2 - 8° C / 1 year from date of receipt                                 |
| <b>PHYSICAL STATE</b>     | Liquid   |
| <b>BUFFER</b>             | Tris-citrate/phosphate buffer, pH 7 to 8 containing 0.09% Sodium Azide |
| <b>ISOTYPE</b>            | IgG  |
| <b>ORIGIN</b>             | USA  |

**PRODUCTION PROCEDURES** Antibody was affinity purified using an epitope specific to Rictor immobilized on solid support.

The epitope recognized by A304-329A maps to a region between residue 1 to 50 of human Rapamycin-Insensitive Companion of mTOR using the numbering given in entry NP\_689969.2 (GeneID 253260).

Antibody concentration was determined by extinction coefficient: absorbance at 280 nm of 1.4 equals 1.0 mg of IgG.

**APPLICATIONS** Centrifuge tube to remove product from lid. Optimal working dilutions should be determined experimentally by the investigator. Prepare working dilution immediately before use.

Western Blot Not recommended. A304-329A has not performed satisfactorily when used for WB of Rictor in crude preparations (e.g. whole cell lysate). This antibody can be used for WB of enriched (e.g. immunoprecipitated) sources of Rictor.

Immunoprecipitation 2 - 10 µg/mg lysate

Immunohistochemistry 1:500 - 1:2,000. Epitope retrieval with citrate buffer pH 6.0 is recommended for FFPE tissue sections.

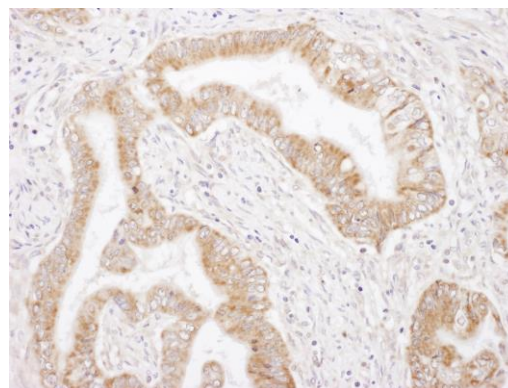
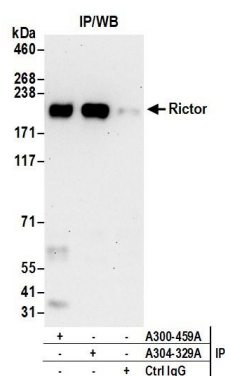
**APPLICATION NOTES** Western blot of immunoprecipitates performed using Normal Pig Serum (Cat. No. S100-020), Goat anti-Rabbit Light Chain HRP Conjugate (Cat. No. A120-113P) and 4-8% SDS-PAGE (link to IP-western blot protocol in Additional Info section below).

**IHC HUMAN CONTROLS** Prostate Carcinoma

**ADDITIONAL INFO** <https://www.bethyl.com/product/A304-329A>

Use the link above to view SDS, a current list of citations, and other product specific information. IP-western blot protocol: [https://www.bethyl.com/content/protocol\\_IP\\_WB](https://www.bethyl.com/content/protocol_IP_WB)

This document certifies that this product has met all of the quality control standards defined by Bethyl Laboratories, Inc.  
Eric McIntush, PhD | Chief Scientific Officer Date: June 21, 2019



**Detection of human Rictor by western blot of immunoprecipitates.** *Samples:* Whole cell lysate (0.5 or 1.0 mg per IP reaction; 20% of IP loaded) from 293T cells. *Antibodies:* Affinity purified rabbit anti-Rictor antibody A304-329A (lot A304-329A-1) used for IP at 6  $\mu$ g per reaction. Rictor was also immunoprecipitated by rabbit anti-Rictor antibody A300-459A. For blotting immunoprecipitated Rictor, A300-459A was used at 1  $\mu$ g/ml. *Detection:* Chemiluminescence with an exposure time of 30 seconds.

**Detection of human Rictor by immunohistochemistry.** *Sample:* FFPE section of human prostate carcinoma. *Antibody:* Affinity purified rabbit anti-Rictor (Cat. No. A304-329A Lot1) used at a dilution of 1:1,000 (1  $\mu$ g/ml). *Detection:* DAB. *Counterstain:* IHC Hematoxylin (blue).