

PolD2 Antibody

Rabbit Polyclonal

Antigen Affinity Purified

Protein ID NP_001120690.1

Catalog No. A304-322A

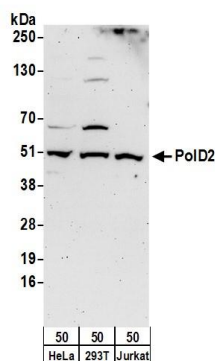
GeneID 5425

Lot No. A304-322A-1

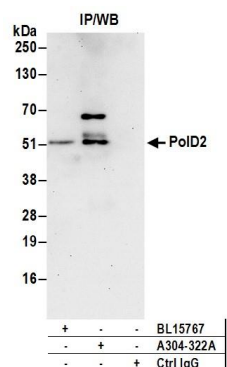


APPLICATIONS	WB, IP, IHC
SPECIES REACTIVITY	Human
AMOUNT	100 µl
CONCENTRATION	1000 µg/ml
STORAGE/SHELF LIFE	2 – 8° C / 1 year from date of receipt
PHYSICAL STATE	Liquid
BUFFER	Tris-citrate/phosphate buffer, pH 7 to 8 containing 0.09% Sodium Azide
ISOTYPE	IgG
ORIGIN	USA
PRODUCTION PROCEDURES	<p>Antibody was affinity purified using an epitope specific to PolD2 immobilized on solid support.</p> <p>The epitope recognized by A304-322A maps to a region between residue 419 to 469 of human Polymerase (DNA directed), Delta 2, Accessory Subunit using the numbering given in entry NP_001120690.1 (GeneID 5425).</p> <p>Antibody concentration was determined by extinction coefficient: absorbance at 280 nm of 1.4 equals 1.0 mg of IgG.</p>
APPLICATIONS	<p>Centrifuge tube to remove product from lid. Optimal working dilutions should be determined experimentally by the investigator. Prepare working dilution immediately before use.</p> <p>Western Blot 1:1,000 – 1:5,000</p> <p>Immunoprecipitation 2 – 10 µg/mg lysate</p> <p>Immunohistochemistry 1:500 – 1:2,000. Epitope retrieval with citrate buffer pH 6.0 is recommended for FFPE tissue sections.</p>
APPLICATION NOTES	<p>Western blot of immunoprecipitates performed using Normal Pig Serum (Cat. No. S100-020), Goat anti-Rabbit Light Chain HRP Conjugate (Cat. No. A120-113P) and 4-20% SDS-PAGE (link to IP-western blot protocol in Additional Info section below).</p> <p>Western blot of lysates performed using standard western blot reagents and 4-20% SDS-PAGE.</p>
IHC HUMAN CONTROLS	Ovarian Carcinoma
ADDITIONAL INFO	<p>https://www.bethyl.com/product/A304-322A</p> <p>Use the link above to view SDS, a current list of citations, and other product specific information.</p> <p>IP-western blot protocol: https://www.bethyl.com/content/protocol_IP_WB</p>

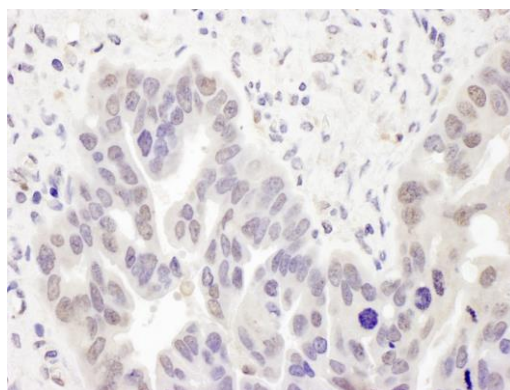
This document certifies that this product has met all of the quality control standards defined by Bethyl Laboratories, Inc.
Eric McIntush, PhD | Chief Scientific Officer Date: June 21, 2019



Detection of human PolD2 by western blot. *Samples:* Whole cell lysate (50 µg) from HeLa, HEK293T, and Jurkat cells. *Antibodies:* Affinity purified rabbit anti-PolD2 antibody A304-322A (lot A304-322A-1) used for WB at 0.4 µg/ml. *Detection:* Chemiluminescence with an exposure time of 3 minutes.



Detection of human PolD2 by western blot of immunoprecipitates. *Samples:* Whole cell lysate (0.5 or 1.0 mg per IP reaction; 20% of IP loaded) from 293T cells. *Antibodies:* Affinity purified rabbit anti-PolD2 antibody A304-322A (lot A304-322A-1) used for IP at 6 µg per reaction. PolD2 was also immunoprecipitated by rabbit anti-PolD2 antibody BL15767. For blotting immunoprecipitated PolD2, A304-322A was used at 1 µg/ml. *Detection:* Chemiluminescence with an exposure time of 30 seconds.



Detection of human PolD2 by immunohistochemistry. *Sample:* FFPE section of human ovarian carcinoma. *Antibody:* Affinity purified rabbit anti-PolD2 (Cat. No. A304-322A Lot1) used at a dilution of 1:1,000 (1 µg/ml). *Detection:* DAB