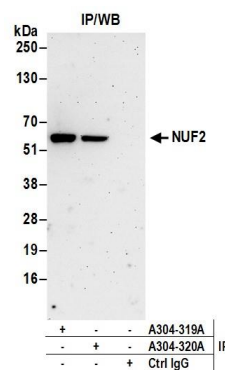


**Detection of human and mouse NUF2 by western blot.**

*Samples:* Whole cell lysate (50 µg) from HeLa, HEK293T, Jurkat, mouse TCMK-1, and mouse NIH 3T3 cells.

*Antibodies:* Affinity purified rabbit anti-NUF2 antibody A304-319A (lot A304-319A-1) used for WB at 0.4 µg/ml.

*Detection:* Chemiluminescence with an exposure time of 30 seconds.



**Detection of human NUF2 by western blot of immunoprecipitates.**

*Samples:* Whole cell lysate (0.5 or 1.0 mg per IP reaction; 20% of IP loaded) from HeLa cells.

*Antibodies:* Affinity purified rabbit anti-NUF2 antibody A304-319A (lot A304-319A-1) used for IP at 6 µg per reaction. NUF2 was also immunoprecipitated by rabbit anti-NUF2 antibody A304-318A.

For blotting immunoprecipitated NUF2, A304-319A was used at 1 µg/ml. *Detection:* Chemiluminescence with an exposure time of 3 minutes.