

GART Antibody

Rabbit Polyclonal

Antigen Affinity Purified

Protein ID NP_000810.1

Catalog No. A304-311A

GeneID 2618

Lot No. A304-311A-1

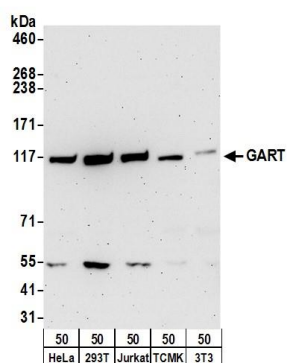


APPLICATIONS	WB, IP, IHC
SPECIES REACTIVITY	Human, Mouse
AMOUNT	100 µl
CONCENTRATION	1000 µg/ml
STORAGE/SHELF LIFE	2 – 8° C / 1 year from date of receipt
PHYSICAL STATE	Liquid
BUFFER	Tris-citrate/phosphate buffer, pH 7 to 8 containing 0.09% Sodium Azide
ISOTYPE	IgG
ORIGIN	USA
PRODUCTION PROCEDURES	<p>Antibody was affinity purified using an epitope specific to GART immobilized on solid support.</p> <p>The epitope recognized by A304-311A maps to a region between residue 200 to 250 of human Glycinamide Ribonucleotide Synthetase using the numbering given in entry NP_000810.1 (GeneID 2618).</p> <p>Antibody concentration was determined by extinction coefficient: absorbance at 280 nm of 1.4 equals 1.0 mg of IgG.</p>
APPLICATIONS	<p>Centrifuge tube to remove product from lid. Optimal working dilutions should be determined experimentally by the investigator. Prepare working dilution immediately before use.</p> <p>Western Blot 1:2,000 – 1:10,000</p> <p>Immunoprecipitation 2 – 10 µg/mg lysate</p> <p>Immunohistochemistry 1:500 – 1:2,000. Epitope retrieval with citrate buffer pH 6.0 is recommended for FFPE tissue sections.</p>
APPLICATION NOTES	<p>Western blot of immunoprecipitates performed using Normal Pig Serum (Cat. No. S100-020), Goat anti-Rabbit Light Chain HRP Conjugate (Cat. No. A120-113P) and 4-8% SDS-PAGE (link to IP-western blot protocol in Additional Info section below).</p> <p>Western blot of lysates performed using standard western blot reagents and 4-8% SDS-PAGE.</p>
IHC HUMAN CONTROLS	Breast Carcinoma, Colon Carcinoma, Ovarian Carcinoma, Prostate Carcinoma
IHC MOUSE CONTROLS	Hybridoma Tumor, Renal Cell Carcinoma, Teratoma
ADDITIONAL INFO	<p>https://www.bethyl.com/product/A304-311A</p> <p>Use the link above to view SDS, a current list of citations, and other product specific information.</p> <p>IP-western blot protocol: https://www.bethyl.com/content/protocol_IP_WB</p>

This document certifies that this product has met all of the quality control standards defined by Bethyl Laboratories, Inc.

Eric McIntush, PhD | Chief Scientific Officer

Date: June 21, 2019

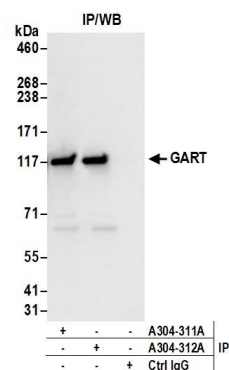


Detection of human and mouse GART by western blot.

Samples: Whole cell lysate (50 µg) from HeLa, HEK293T, Jurkat, mouse TCMK-1, and mouse NIH 3T3 cells.

Antibodies: Affinity purified rabbit anti-GART antibody A304-311A (lot A304-311A-1) used for WB at 0.1 µg/ml.

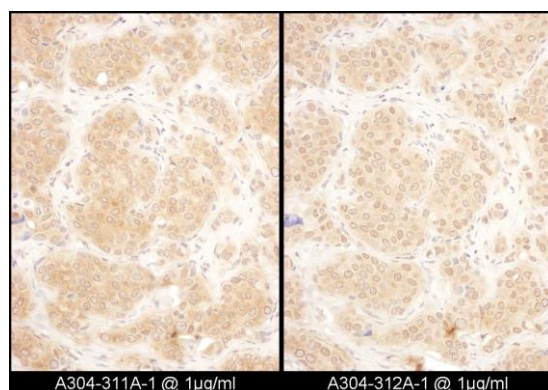
Detection: Chemiluminescence with an exposure time of 3 minutes.



Detection of human GART by western blot of immunoprecipitates.

Samples: Whole cell lysate (0.5 or 1.0 mg per IP reaction; 20% of IP loaded) from 293T cells.

Antibodies: Affinity purified rabbit anti-GART antibody A304-311A (lot A304-311A-1) used for IP at 6 µg per reaction. GART was also immunoprecipitated by rabbit anti-GART antibody A304-312A. For blotting immunoprecipitated GART, A304-312A was used at 1 µg/ml. **Detection:** Chemiluminescence with an exposure time of 3 seconds.

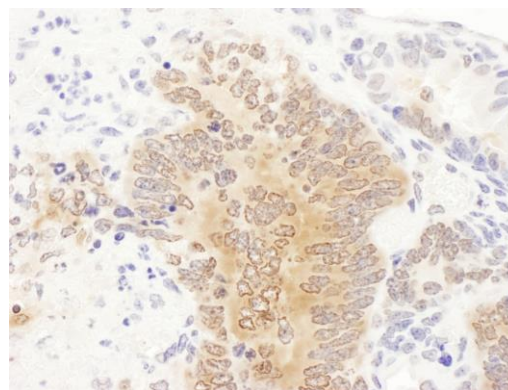


Detection of human GART by immunohistochemistry.

Samples: FFPE serial sections of human breast carcinoma.

Antibody: Affinity purified rabbit anti-GART (Cat. No. A304-311A Lot1, left image and Cat. No. A304-312A Lot1, right image) used at a dilution of 1:1,000 (1 µg/ml).

Detection: DAB



Detection of mouse GART by immunohistochemistry.

Sample: FFPE section of mouse teratoma. **Antibody:** Affinity purified rabbit anti-GART (Cat. No. A304-311A Lot1) used at a dilution of 1:1,000 (1 µg/ml). **Detection:** DAB