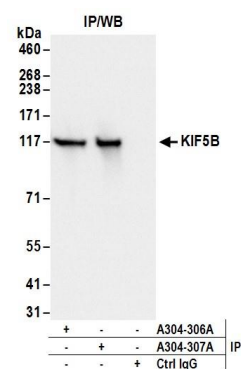


Detection of human KIF5B by western blot. *Samples:* Whole cell lysate (50 µg) from HeLa, HEK293T, and Jurkat and cells. *Antibodies:* Affinity purified rabbit anti-KIF5B antibody A304-307A (lot A304-307A-1) used for WB at 1 µg/ml. *Detection:* Chemiluminescence with an exposure time of 30 seconds.



Detection of human KIF5B by western blot of immunoprecipitates. *Samples:* Whole cell lysate (0.5 or 1.0 mg per IP reaction; 20% of IP loaded) from 293T and cells. *Antibodies:* Affinity purified rabbit anti-KIF5B antibody A304-307A (lot A304-307A-1) used for IP at 6 µg per reaction. KIF5B was also immunoprecipitated by rabbit anti-KIF5B antibody A304-306A. For blotting immunoprecipitated KIF5B, A304-307A was used at 1 µg/ml. *Detection:* Chemiluminescence with an exposure time of 1 second.