

RAN Antibody

Rabbit Polyclonal

Antigen Affinity Purified Protein ID NP_006316.1

Catalog No. A304-298A GeneID 5901

Lot No. A304-298A-2



APPLICATIONS	WB, IP, IHC
SPECIES REACTIVITY	Human, Mouse
PRESUMED REACTIVITY	Based on 100% sequence identity, this antibody is predicted to react with Rat, Zebrafish, X. laevis, X. tropicalis, Chicken, Bovine, Dog and Orangutan
AMOUNT	100 µl
CONCENTRATION	1000 µg/ml
STORAGE/SHELF LIFE	2 – 8° C / 1 year from date of receipt
PHYSICAL STATE	Liquid
BUFFER	Tris-citrate/phosphate buffer, pH 7 to 8 containing 0.09% Sodium Azide
ISOTYPE	IgG
ORIGIN	USA
PRODUCTION PROCEDURES	Antibody was affinity purified using an epitope specific to RAN immobilized on solid support.

The epitope recognized by A304-298A maps to a region between residue 166 to 216 of human RAs-Related Nuclear Protein using the numbering given in entry NP_006316.1 (GeneID 5901).

Antibody concentration was determined by extinction coefficient: absorbance at 280 nm of 1.4 equals 1.0 mg of IgG.

APPLICATIONS Centrifuge tube to remove product from lid. Optimal working dilutions should be determined experimentally by the investigator. Prepare working dilution immediately before use.

Western Blot 1:10,000 – 1:25,000

Immunoprecipitation 2 – 10 µg/mg lysate

Immunohistochemistry 1:500 to 1:2,000. Epitope retrieval with citrate buffer pH6.0 is recommended for FFPE tissue sections.

IHC HUMAN CONTROLS Breast Carcinoma, Ovarian Carcinoma, Testicular Seminoma

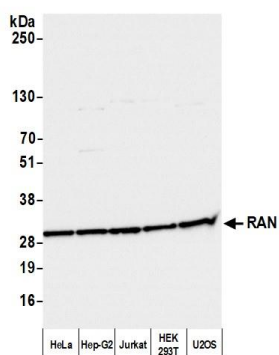
IHC MOUSE CONTROLS Renal Cell Carcinoma

ADDITIONAL INFO <https://www.bethyl.com/product/A304-298A>

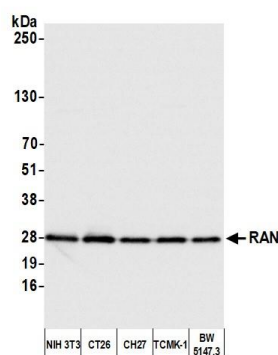
Use the link above to view SDS, a current list of citations, and other product specific information.

IP-western blot protocol: https://www.bethyl.com/content/protocol_IP_WB

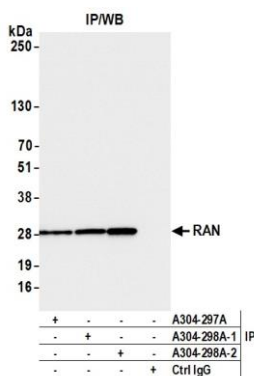
This document certifies that this product has met all of the quality control standards defined by Bethyl Laboratories, Inc.
Brian McWilliams, PhD Date: March 23, 2021



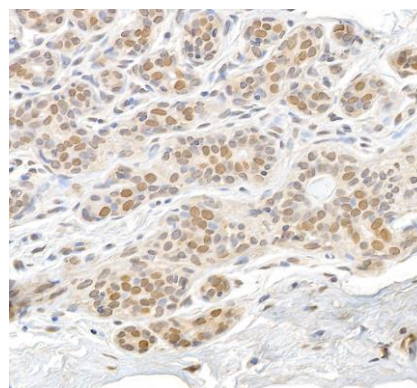
Detection of human RAN by western blot. *Samples:* Whole cell lysate (2 µg) from HeLa, Hep-G2, Jurkat, HEK293T, and U2OS cells prepared using NETN lysis buffer. *Antibody:* Affinity purified rabbit anti-RAN antibody (A304-298A lot 2) used for WB at 0.04 µg/ml. *Detection:* Chemiluminescence with an exposure time of 1 second.



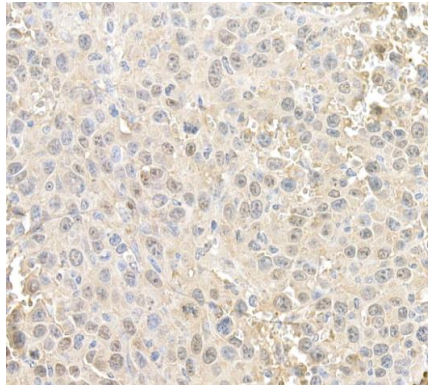
Detection of mouse RAN by western blot. *Samples:* Whole cell lysate (2 µg) from NIH 3T3, CT26, CH27, TCMK-1, and BW5147.3 cells prepared using NETN lysis buffer. *Antibody:* Affinity purified rabbit anti-RAN antibody (A304-298A lot 2) used for WB at 0.04 µg/ml. *Detection:* Chemiluminescence with an exposure time of 1 second.



Detection of human RAN by western blot of immunoprecipitates. *Samples:* Whole cell lysate (1.0 mg per IP reaction; 5% of IP loaded) from HEK293T cells prepared using NETN lysis buffer. *Antibodies:* Affinity purified rabbit anti-RAN antibody (A304-298A lot 2) used for IP at 6 µg per reaction. RAN was also immunoprecipitated by a previous lot of this antibody (A304-298A lot 1) and a another antibody against a different epitope of RAN (A304-297A). For blotting immunoprecipitated RAN, A304-298A was used at 0.04 µg/ml. *Detection:* Chemiluminescence with an exposure time of 1 second.



Detection of human RAN by immunohistochemistry. *Samples:* FFPE section of human breast carcinoma. *Antibody:* Affinity purified rabbit anti-RAN (A304-298A lot 2) used at a dilution of 1:5,000 (0.2ug/ml). *Detection:* DAB



Detection of human RAN by immunohistochemistry.

Samples: FFPE section of mouse renal cell carcinoma.

Antibody: Affinity purified rabbit anti-RAN (A304-298A lot 2) used at a dilution of 1:1,000 (1 ug/ml). *Detection:* DAB