

# DPY30 Antibody

Rabbit Polyclonal

Antigen Affinity Purified	RefSeq ID	NP_115963.1
Catalog No. A304-296A	Uniprot ID	Q9C005
Lot No. 2	GenID	84661

---

<b>APPLICATIONS</b>	IP, IHC
<b>SPECIES REACTIVITY</b>	Human, Mouse
<b>PRESUMED REACTIVITY</b>	Based on 100% sequence identity, this antibody is predicted to react with Rat and Bovine
<b>AMOUNT</b>	100 µl
<b>CONCENTRATION</b>	1000 µg/ml
<b>STORAGE/SHELF LIFE</b>	2 – 8°C / 1 year from date of receipt
<b>PHYSICAL STATE</b>	Liquid
<b>BUFFER</b>	Tris-citrate/phosphate buffer, pH 7 to 8 containing 0.09% Sodium Azide
<b>ISOTYPE</b>	IgG
<b>ORIGIN</b>	USA
<b>PRODUCTION PROCEDURES</b>	Antibody was affinity purified using an epitope specific to DPY30 immobilized on solid support.

The epitope recognized by A304-296A maps to a region between residue 1 to 50 of human DPY-30 Homolog using the numbering given in entry NP\_115963.1 (GenID 84661).

Immunoglobulin concentration was determined using Beer's Law where 1mg/mL IgG has an A280 of 1.4.

**APPLICATIONS** Centrifuge tube to remove product from lid. Optimal working dilutions should be determined experimentally by the investigator. Prepare working dilution immediately before use.

Immunoprecipitation	6 µg/mg lysate
Immunohistochemistry	1:1000 – 1:5000. Epitope retrieval with citrate buffer pH 6.0 is recommended for FFPE tissue sections.

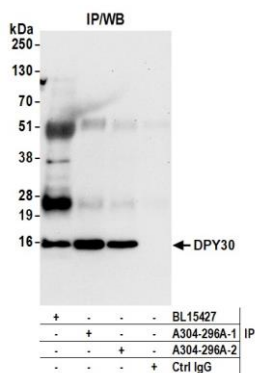
**IHC HUMAN CONTROLS** Breast Carcinoma, Colon Carcinoma, Ovarian Carcinoma, Prostate Carcinoma, Testicular Seminoma

**IHC MOUSE CONTROLS** Renal Cell Carcinoma, Teratoma

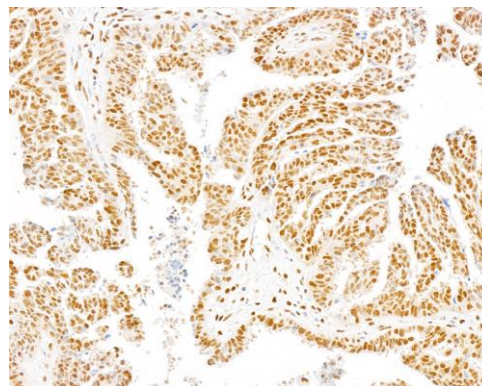
**ADDITIONAL INFO** <https://www.fortislife.com/p/A304-296A>

Use the link above to view SDS, a current list of citations, and other product specific information.

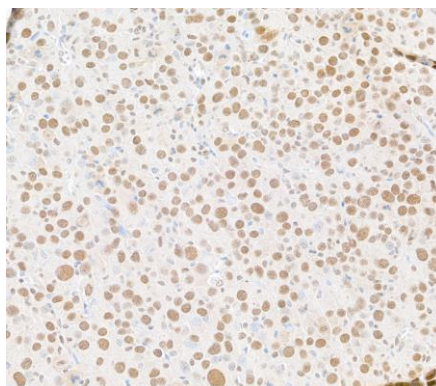
This document certifies that this product has met all of the quality control standards defined by Bethyl Laboratories, Inc.  
Michael Spencer, PhD Date: March 28, 2024



**Detection of human DPY30 by western blot of immunoprecipitates.** *Samples:* Whole cell lysate (1.0 mg per IP reaction; 20% of IP loaded) from HEK293T cells prepared using NETN lysis buffer. *Antibodies:* Affinity purified rabbit anti-DPY30 antibody (A304-296A lot 2) used for IP at 6  $\mu$ g per reaction. DPY30 was also immunoprecipitated by a previous lot of this antibody (A304-296A lot 1) and a second antibody against a different epitope of DPY30 (BL15427). For blotting immunoprecipitated DPY30, A304-296A was used at 0.4  $\mu$ g/ml. *Detection:* Chemiluminescence with an exposure time of 75 seconds.



**Detection of human DPY30 by immunohistochemistry.** *Sample:* FFPE section of ovarian carcinoma. *Antibody:* Affinity purified rabbit anti-DPY30 antibody (A304-296A). *Secondary:* HRP-conjugated goat anti-rabbit IgG (A120-501P).



**Detection of mouse DPY30 by immunohistochemistry.** *Sample:* FFPE section of mouse renal cell carcinoma. *Antibody:* Affinity purified rabbit anti-DPY30 antibody (A304-296A). *Secondary:* HRP-conjugated goat anti-rabbit IgG (A120-501P).