

ACAT2 Antibody

Rabbit Polyclonal

Antigen Affinity Purified

Protein ID NP_005882.2

Catalog No. A304-293A

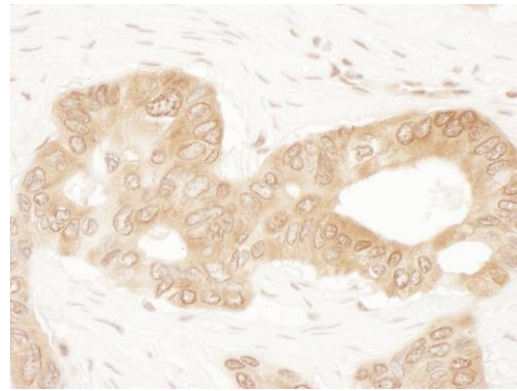
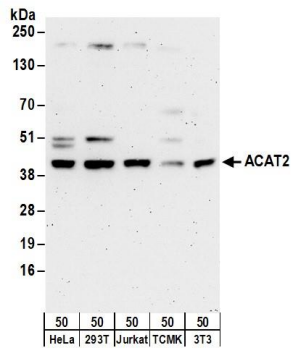
GeneID 39

Lot No. A304-293A-1



APPLICATIONS	WB, IHC						
SPECIES REACTIVITY	Human, Mouse						
AMOUNT	100 µl						
CONCENTRATION	1000 µg/ml						
STORAGE/SHELF LIFE	2 - 8° C / 1 year from date of receipt						
PHYSICAL STATE	Liquid						
BUFFER	Tris-citrate/phosphate buffer, pH 7 to 8 containing 0.09% Sodium Azide						
ISOTYPE	IgG						
ORIGIN	USA						
PRODUCTION PROCEDURES	<p>Antibody was affinity purified using an epitope specific to ACAT2 immobilized on solid support.</p> <p>The epitope recognized by A304-293A maps to a region between residue 150 to 200 of human Acetyl-CoA Acetyltransferase 2 using the numbering given in entry NP_005882.2 (GeneID 39).</p> <p>Antibody concentration was determined by extinction coefficient: absorbance at 280 nm of 1.4 equals 1.0 mg of IgG.</p>						
APPLICATIONS	<p>Centrifuge tube to remove product from lid. Optimal working dilutions should be determined experimentally by the investigator. Prepare working dilution immediately before use.</p> <table><tr><td>Western Blot</td><td>1:2,000 – 1:10,000</td></tr><tr><td>Immunoprecipitation</td><td>Not recommended</td></tr><tr><td>Immunohistochemistry</td><td>1:500 – 1:2,000. Epitope retrieval with citrate buffer pH 6.0 is recommended for FFPE tissue sections.</td></tr></table>	Western Blot	1:2,000 – 1:10,000	Immunoprecipitation	Not recommended	Immunohistochemistry	1:500 – 1:2,000. Epitope retrieval with citrate buffer pH 6.0 is recommended for FFPE tissue sections.
Western Blot	1:2,000 – 1:10,000						
Immunoprecipitation	Not recommended						
Immunohistochemistry	1:500 – 1:2,000. Epitope retrieval with citrate buffer pH 6.0 is recommended for FFPE tissue sections.						
APPLICATION NOTES	Western blot of lysates performed using standard western blot reagents and 4-20% SDS-PAGE.						
IHC HUMAN CONTROLS	Breast Carcinoma, Ovarian Carcinoma, Prostate Carcinoma						
IHC MOUSE CONTROLS	Teratoma						
ADDITIONAL INFO	<p>https://www.bethyl.com/product/A304-293A</p> <p>Use the link above to view SDS, a current list of citations, and other product specific information.</p>						

This document certifies that this product has met all of the quality control standards defined by Bethyl Laboratories, Inc.
Eric McIntush, PhD | Chief Scientific Officer Date: June 21, 2019



Detection of human and mouse ACAT2 by western blot.

Samples: Whole cell lysate (50 µg) from HeLa, HEK293T, Jurkat, mouse TCMK-1, and mouse NIH 3T3 cells.

Antibodies: Affinity purified rabbit anti-ACAT2 antibody A304-293A (lot A304-293A-1) used for WB at 0.1 µg/ml.

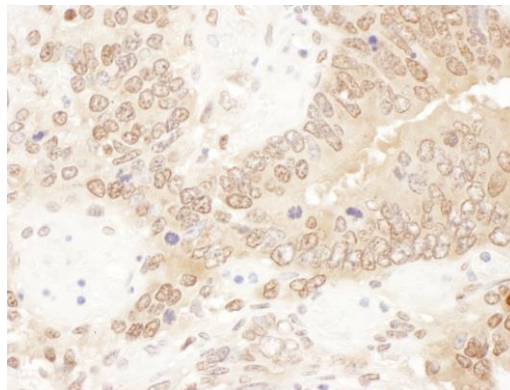
Detection: Chemiluminescence with an exposure time of 3 minutes.

Detection of human ACAT2 by immunohistochemistry.

Sample: FFPE section of human ovarian carcinoma.

Antibody: Affinity purified rabbit anti- ACAT2 (Cat. No. A304-293A Lot1) used at a dilution of 1:1,000 (1 µg/ml).

Detection: DAB. *Counterstain:* IHC Hematoxylin (blue).



Detection of mouse ACAT2 by immunohistochemistry.

Sample: FFPE section of mouse teratoma. *Antibody:* Affinity purified rabbit anti- ACAT2 (Cat. No. A304-293A Lot1) used at a dilution of 1:1,000 (1 µg/ml). *Detection:* DAB