

MAT2A Antibody

Rabbit Polyclonal

Antigen Affinity Purified

Protein ID NP_005902.1

Catalog No. A304-279A

GeneID 4144

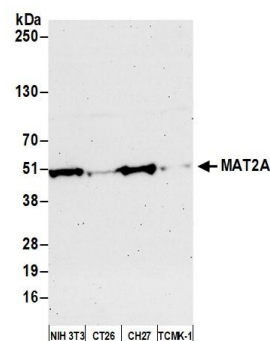
Lot No. A304-279A-2

APPLICATIONS	WB, IP
SPECIES REACTIVITY	Human, Mouse
PRESUMED REACTIVITY	Based on 100% sequence identity, this antibody is predicted to react with Rat and Orangutan
AMOUNT	100 µl
CONCENTRATION	1000 µg/ml
STORAGE/SHELF LIFE	2 – 8°C / 1 year from date of receipt
PHYSICAL STATE	Liquid
BUFFER	Tris-citrate/phosphate buffer, pH 7 to 8 containing 0.09% Sodium Azide
ISOTYPE	IgG
ORIGIN	USA
PRODUCTION PROCEDURES	<p>Antibody was affinity purified using an epitope specific to MAT2A immobilized on solid support.</p> <p>The epitope recognized by A304-279A maps to a region between residue 1 to 50 of human Methionine Adenosyltransferase II, Alpha using the numbering given in entry NP_005902.1 (GeneID 4144).</p> <p>Antibody concentration was determined by extinction coefficient: absorbance at 280 nm of 1.4 equals 1.0 mg of IgG.</p>
APPLICATIONS	<p>Centrifuge tube to remove product from lid. Optimal working dilutions should be determined experimentally by the investigator. Prepare working dilution immediately before use.</p> <p>Western Blot 1:10,000 – 1:25,000</p> <p>Immunoprecipitation 2–10 µg/mg lysate</p>
ADDITIONAL INFO	<p>https://www.bethyl.com/product/A304-279A</p> <p>Use the link above to view SDS, a current list of citations, and other product specific information.</p>

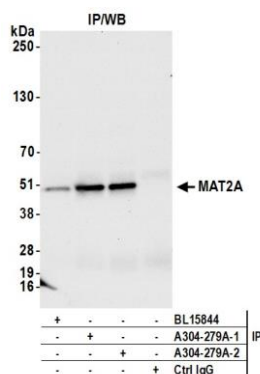
This document certifies that this product has met all of the quality control standards defined by Bethyl Laboratories, Inc.
Michael Spencer, PhD Date: March 8, 2022



Detection of human MAT2A by western blot. *Samples:* Whole cell lysate (10 µg) from HeLa, HEK293T, Jurkat, Hep-G2, and K-562 cells prepared using NETN lysis buffer. *Antibody:* Affinity purified rabbit anti-MAT2A antibody (A304-279A lot 2) used for WB at 0.04 µg/ml. *Detection:* Chemiluminescence with an exposure time of 3 minutes.



Detection of mouse MAT2A by western blot. *Samples:* Whole cell lysate (50 µg) from NIH 3T3, CT26, CH27, TCMK-1, and BW5147.3 cells prepared using NETN lysis buffer. *Antibody:* Affinity purified rabbit anti-MAT2A antibody (A304-279A lot 2) used for WB at 0.04 µg/ml. *Detection:* Chemiluminescence with an exposure time of 75 seconds.



Detection of human MAT2A by western blot of immunoprecipitates. *Samples:* Whole cell lysate (1.0 mg per IP reaction; 20% of IP loaded) from HEK293T cells prepared using NETN lysis buffer. *Antibodies:* Affinity purified rabbit anti-MAT2A antibody (A304-279A lot 2) used for IP at 6 µg per reaction. MAT2A was also immunoprecipitated by a previous lot of this antibody (A304-279A lot 1) and a second antibody against a different epitope of MAT2A (BL15844). For blotting immunoprecipitated MAT2A, A304-279A was used at 0.04 µg/ml. *Detection:* Chemiluminescence with an exposure time of 10 seconds.