

PFKM Antibody

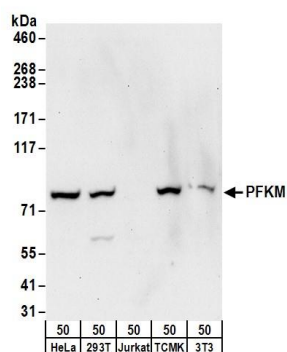
Rabbit Polyclonal

Antigen Affinity Purified Protein ID NP_000280.1
Catalog No. A304-255A GeneID 5213
Lot No. A304-255A-1



APPLICATIONS	WB, IP
SPECIES REACTIVITY	Human, Mouse
PRESUMED REACTIVITY	Based on 100% sequence identity, this antibody is predicted to react with Dog and Horse
AMOUNT	100 µl
CONCENTRATION	1000 µg/ml
STORAGE/SHELF LIFE	2 – 8° C / 1 year from date of receipt
PHYSICAL STATE	Liquid
BUFFER	Tris-citrate/phosphate buffer, pH 7 to 8 containing 0.09% Sodium Azide
ISOTYPE	IgG
ORIGIN	USA
PRODUCTION PROCEDURES	Antibody was affinity purified using an epitope specific to PFKM immobilized on solid support. The epitope recognized by A304-255A maps to a region between residue 1 to 50 of human Phosphofructokinase, Muscle using the numbering given in entry NP_000280.1 (GeneID 5213). Antibody concentration was determined by extinction coefficient: absorbance at 280 nm of 1.4 equals 1.0 mg of IgG.
APPLICATIONS	Centrifuge tube to remove product from lid. Optimal working dilutions should be determined experimentally by the investigator. Prepare working dilution immediately before use. Western Blot 1:2,000 – 1:10,000 Immunoprecipitation 2 – 10 µg/mg lysate
APPLICATION NOTES	Western blot of immunoprecipitates performed using Normal Pig Serum (Cat. No. S100-020), Goat anti-Rabbit Light Chain HRP Conjugate (Cat. No. A120-113P) and 4-8% SDS-PAGE (link to IP-western blot protocol in Additional Info section below). Western blot of lysates performed using standard western blot reagents and 4-8% SDS-PAGE.
ADDITIONAL INFO	https://www.bethyl.com/product/A304-255A Use the link above to view SDS, a current list of citations, and other product specific information. IP-western blot protocol: https://www.bethyl.com/content/protocol_IP_WB

This document certifies that this product has met all of the quality control standards defined by Bethyl Laboratories, Inc.
Eric McIntush, PhD | Chief Scientific Officer Date: June 21, 2019

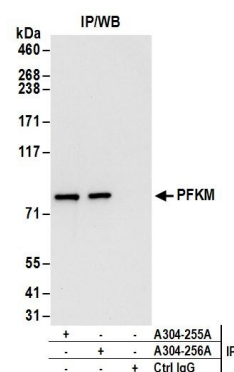


Detection of human and mouse PFKM by western blot.

Samples: Whole cell lysate (50 µg) from HeLa, HEK293T, Jurkat, mouse TCMK-1, and mouse NIH 3T3 cells.

Antibodies: Affinity purified rabbit anti-PFKM antibody A304-255A (lot A304-255A-1) used for WB at 0.1 µg/ml.

Detection: Chemiluminescence with an exposure time of 30 seconds.



Detection of human PFKM by western blot of immunoprecipitates.

Samples: Whole cell lysate (0.5 or 1.0 mg per IP reaction; 20% of IP loaded) from 293T cells.

Antibodies: Affinity purified rabbit anti-PFKM antibody A304-255A (lot A304-255A-1) used for IP at 6 µg per reaction. PFKM was also immunoprecipitated by rabbit anti-PFKM antibody A304-256A.

For blotting immunoprecipitated PFKM, A304-255A was used at 1 µg/ml. *Detection:* Chemiluminescence with an exposure time of 10 seconds.