

PFKFB3 Antibody

Rabbit Polyclonal

Antigen Affinity Purified

Protein ID NP_004557.1

Catalog No. A304-249A

GeneID 5209

Lot No. A304-249A-1



APPLICATIONS	WB, IP
SPECIES REACTIVITY	Human
AMOUNT	100 µl
CONCENTRATION	1000 µg/ml
STORAGE/SHELF LIFE	2 - 8° C / 1 year from date of receipt
PHYSICAL STATE	Liquid
BUFFER	Tris-citrate/phosphate buffer, pH 7 to 8 containing 0.09% Sodium Azide
ISOTYPE	IgG
ORIGIN	USA

PRODUCTION PROCEDURES Antibody was affinity purified using an epitope specific to PFKFB3 immobilized on solid support.

The epitope recognized by A304-249A maps to a region between residue 470 to 520 of human 6-phosphofructo-2-kinase/fructose-2,6-biphosphatase 3 using the numbering given in entry NP_004557.1 (GeneID 5209).

Antibody concentration was determined by extinction coefficient: absorbance at 280 nm of 1.4 equals 1.0 mg of IgG.

APPLICATIONS Centrifuge tube to remove product from lid. Optimal working dilutions should be determined experimentally by the investigator. Prepare working dilution immediately before use.

Western Blot 1:2,000 - 1:10,000

Immunoprecipitation 2 - 10 µg/mg lysate

APPLICATION NOTES Western blot of immunoprecipitates performed using Normal Pig Serum (Cat. No. S100-020), Goat anti-Rabbit Light Chain HRP Conjugate (Cat. No. A120-113P) and 4-20% SDS-PAGE (link to IP-western blot protocol in Additional Info section below).

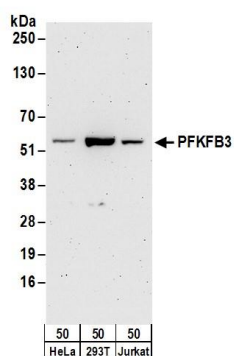
Western blot of lysates performed using standard western blot reagents and 4-20% SDS-PAGE.

ADDITIONAL INFO <https://www.bethyl.com/product/A304-249A>

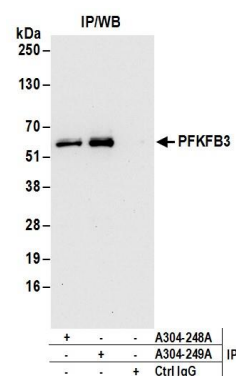
Use the link above to view SDS, a current list of citations, and other product specific information.

IP-western blot protocol: https://www.bethyl.com/content/protocol_IP_WB

This document certifies that this product has met all of the quality control standards defined by Bethyl Laboratories, Inc.
Eric McIntush, PhD | Chief Scientific Officer Date: June 21, 2019



Detection of human PFKFB3 by western blot. *Samples:* Whole cell lysate (50 µg) from HeLa, HEK293T, and Jurkat cells. *Antibodies:* Affinity purified rabbit anti-PFKFB3 antibody A304-249A (lot A304-249A-1) used for WB at 0.1 µg/ml. *Detection:* Chemiluminescence with an exposure time of 3 minutes.



Detection of human PFKFB3 by western blot of immunoprecipitates. *Samples:* Whole cell lysate (0.5 to 1.0 mg per IP reaction; 20% of IP loaded) from Jurkat cells. *Antibodies:* Affinity purified rabbit anti-PFKFB3 antibody A304-249A (lot A304-249A-1) used for IP at 6 µg per reaction. PFKFB3 was also immunoprecipitated by rabbit anti-PFKFB3 antibody A304-248A. For blotting immunoprecipitated PFKFB3, A304-249A was used at 1 µg/ml. *Detection:* Chemiluminescence with an exposure time of 30 seconds.