

Gephyrin Antibody

Rabbit Polyclonal

Antigen Affinity Purified

Protein ID NP_001019389.1

Catalog No. A304-246A

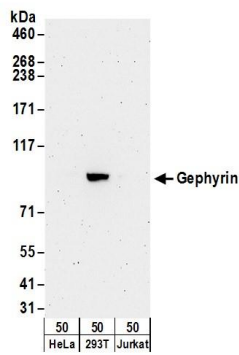
GeneID 10243

Lot No. A304-246A-1



APPLICATIONS	WB
SPECIES REACTIVITY	Human
PRESUMED REACTIVITY	Based on 100% sequence identity, this antibody is predicted to react with Mouse, Rat and Chicken
AMOUNT	100 µl
CONCENTRATION	1000 µg/ml
STORAGE/SHELF LIFE	2 – 8° C / 1 year from date of receipt
PHYSICAL STATE	Liquid
BUFFER	Tris-citrate/phosphate buffer, pH 7 to 8 containing 0.09% Sodium Azide
ISOTYPE	IgG
ORIGIN	USA
PRODUCTION PROCEDURES	Antibody was affinity purified using an epitope specific to Gephyrin immobilized on solid support. The epitope recognized by A304-246A maps to a region between residue 686 to 736 of human Gephyrin using the numbering given in entry NP_001019389.1 (GeneID 10243). Antibody concentration was determined by extinction coefficient: absorbance at 280 nm of 1.4 equals 1.0 mg of IgG.
APPLICATIONS	Centrifuge tube to remove product from lid. Optimal working dilutions should be determined experimentally by the investigator. Prepare working dilution immediately before use. Western Blot 1:2,000 – 1:10,000 Immunoprecipitation Not recommended
APPLICATION NOTES	Western blot of lysates performed using standard western blot reagents and 4-8% SDS-PAGE.
ADDITIONAL INFO	https://www.bethyl.com/product/A304-246A Use the link above to view SDS, a current list of citations, and other product specific information.

This document certifies that this product has met all of the quality control standards defined by Bethyl Laboratories, Inc.
Eric McIntush, PhD | Chief Scientific Officer Date: June 21, 2019



Detection of human Gephyrin by western blot. *Samples:* Whole cell lysate (50 µg) from HeLa, HEK293T, and Jurkat cells. *Antibodies:* Affinity purified rabbit anti-Gephyrin antibody A304-246A (lot A304-246A-1) used for WB at 0.1 µg/ml. *Detection:* Chemiluminescence with an exposure time of 3 minutes.