

# PKC-eta Antibody

Rabbit Polyclonal

Antigen Affinity Purified

Protein ID NP\_006246.2

Catalog No. A304-236A

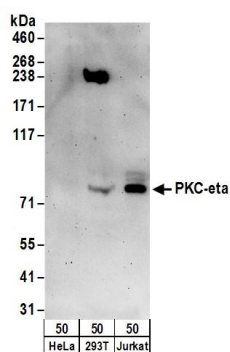
GeneID 5583

Lot No. A304-236A-1

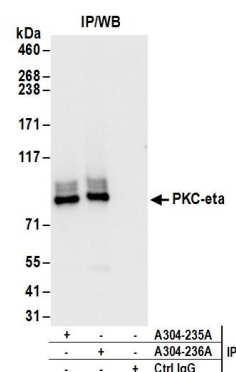


|                              |  |
|------------------------------|--|
| <b>APPLICATIONS</b>          | WB, IP   |
| <b>SPECIES REACTIVITY</b>    | Human  |
| <b>PRESUMED REACTIVITY</b>   | Based on 100% sequence identity, this antibody is predicted to react with Rat  |
| <b>AMOUNT</b>                | 100 µl   |
| <b>CONCENTRATION</b>         | 1000 µg/ml   |
| <b>STORAGE/SHELF LIFE</b>    | 2 - 8° C / 1 year from date of receipt   |
| <b>PHYSICAL STATE</b>        | Liquid   |
| <b>BUFFER</b>                | Tris-citrate/phosphate buffer, pH 7 to 8 containing 0.09% Sodium Azide   |
| <b>ISOTYPE</b>               | IgG  |
| <b>ORIGIN</b>                | USA  |
| <b>PRODUCTION PROCEDURES</b> | <p>Antibody was affinity purified using an epitope specific to PKC-eta immobilized on solid support.</p> <p>The epitope recognized by A304-236A maps to a region between residue 633 to 683 of human Protein Kinase C, Eta using the numbering given in entry NP_006246.2 (GeneID 5583).</p> <p>Antibody concentration was determined by extinction coefficient: absorbance at 280 nm of 1.4 equals 1.0 mg of IgG.</p> |
| <b>APPLICATIONS</b>          | <p>Centrifuge tube to remove product from lid. Optimal working dilutions should be determined experimentally by the investigator. Prepare working dilution immediately before use.</p> <p>Western Blot 1:2,000 - 1:10,000</p> <p>Immunoprecipitation 2 - 10 µg/mg lysate</p>   |
| <b>APPLICATION NOTES</b>     | <p>Western blot of immunoprecipitates performed using Normal Pig Serum (Cat. No. S100-020), Goat anti-Rabbit Light Chain HRP Conjugate (Cat. No. A120-113P) and 4-8% SDS-PAGE (link to IP-western blot protocol in Additional Info section below).</p> <p>Western blot of lysates performed using standard western blot reagents and 4-8% SDS-PAGE.</p>  |
| <b>ADDITIONAL INFO</b>       | <p><a href="https://www.bethyl.com/product/A304-236A">https://www.bethyl.com/product/A304-236A</a></p> <p>Use the link above to view SDS, a current list of citations, and other product specific information.</p> <p>IP-western blot protocol: <a href="https://www.bethyl.com/content/protocol_IP_WB">https://www.bethyl.com/content/protocol_IP_WB</a></p>  |

This document certifies that this product has met all of the quality control standards defined by Bethyl Laboratories, Inc.  
Eric McIntush, PhD | Chief Scientific Officer Date: June 21, 2019



**Detection of human PKC-eta by western blot.** *Samples:* Whole cell lysate (50 µg) from HeLa, HEK293T, and Jurkat cells. *Antibodies:* Affinity purified rabbit anti-PKC-eta antibody A304-236A (lot A304-236A-1) used for WB at 0.1 µg/ml. *Detection:* Chemiluminescence with an exposure time of 3 minutes.



**Detection of human PKC-eta by western blot of immunoprecipitates.** *Samples:* Whole cell lysate (1 mg for IP; 20% of IP loaded) from Jurkat cells. *Antibodies:* Affinity purified rabbit anti-PKC-eta antibody A304-236A (lot A304-236A-1) used for IP at 6 µg/mg lysate. PKC-eta was also immunoprecipitated by rabbit anti-PKC-eta antibody A304-235A. For blotting immunoprecipitated PKC-eta, A304-236A was used at 1 µg/ml. *Detection:* Chemiluminescence with an exposure time of 3 seconds.