

# CSK Antibody

Rabbit Polyclonal

Antigen Affinity Purified

Protein ID NP\_004374.1

Catalog No. A304-231A

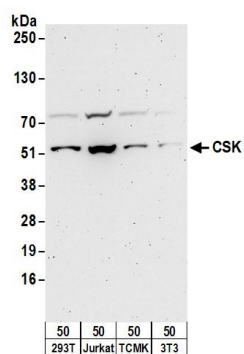
GeneID 1445

Lot No. A304-231A-1



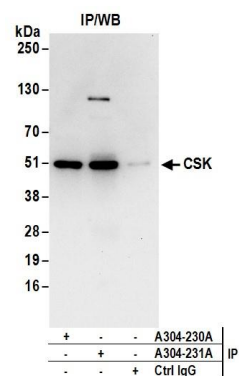
<b>APPLICATIONS</b>	WB, IP
<b>SPECIES REACTIVITY</b>	Human, Mouse
<b>AMOUNT</b>	100 µl
<b>CONCENTRATION</b>	1000 µg/ml
<b>STORAGE/SHELF LIFE</b>	2 - 8° C / 1 year from date of receipt
<b>PHYSICAL STATE</b>	Liquid
<b>BUFFER</b>	Tris-citrate/phosphate buffer, pH 7 to 8 containing 0.09% Sodium Azide
<b>ISOTYPE</b>	IgG
<b>ORIGIN</b>	USA
<b>PRODUCTION PROCEDURES</b>	<p>Antibody was affinity purified using an epitope specific to CSK immobilized on solid support.</p> <p>The epitope recognized by A304-231A maps to a region between residue 400 to 450 of human C-src Tyrosine Kinase using the numbering given in entry NP_004374.1 (GeneID 1445).</p> <p>Antibody concentration was determined by extinction coefficient: absorbance at 280 nm of 1.4 equals 1.0 mg of IgG.</p>
<b>APPLICATIONS</b>	<p>Centrifuge tube to remove product from lid. Optimal working dilutions should be determined experimentally by the investigator. Prepare working dilution immediately before use.</p> <p>Western Blot 1:2,000 - 1:10,000</p> <p>Immunoprecipitation 2 - 10 µg/mg lysate</p>
<b>APPLICATION NOTES</b>	<p>Western blot of immunoprecipitates performed using Normal Pig Serum (Cat. No. S100-020), Goat anti-Rabbit Light Chain HRP Conjugate (Cat. No. A120-113P) and 4-20% SDS-PAGE (link to IP-western blot protocol in Additional Info section below).</p> <p>Western blot of lysates performed using standard western blot reagents and 4-20% SDS-PAGE.</p>
<b>ADDITIONAL INFO</b>	<p><a href="https://www.bethyl.com/product/A304-231A">https://www.bethyl.com/product/A304-231A</a></p> <p>Use the link above to view SDS, a current list of citations, and other product specific information.</p> <p>IP-western blot protocol: <a href="https://www.bethyl.com/content/protocol_IP_WB">https://www.bethyl.com/content/protocol_IP_WB</a></p>

This document certifies that this product has met all of the quality control standards defined by Bethyl Laboratories, Inc.  
Eric McIntush, PhD | Chief Scientific Officer Date: June 21, 2019



#### Detection of human and mouse CSK by western blot.

**Samples:** Whole cell lysate (50 µg) from 293T, Jurkat, mouse TCMK-1, and mouse NIH 3T3 cells. **Antibodies:** Affinity purified rabbit anti-CSK antibody A304-231A (lot A304-231A-1) used for WB at 0.1 µg/ml. **Detection:** Chemiluminescence with an exposure time of 3 minutes.



#### Detection of human CSK by western blot of immunoprecipitates.

**Samples:** Whole cell lysate (1 mg for IP; 20% of IP loaded) from Jurkat cells. **Antibodies:** Affinity purified rabbit anti-CSK antibody A304-231A (lot A304-231A-1) used for IP at 6 µg/mg lysate. CSK was also immunoprecipitated by rabbit anti-CSK antibody A304-230A. For blotting immunoprecipitated CSK, A304-231A was used at 1 µg/ml. **Detection:** Chemiluminescence with an exposure time of 10 seconds.