

CDK4 Antibody

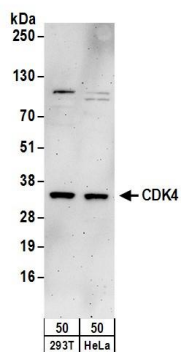
Rabbit Polyclonal

Antigen Affinity Purified	Protein ID	NP_000066.1
Catalog No. A304-224A-M	GeneID	1019
Lot No. A304-224A-M-1		



APPLICATIONS	WB
SPECIES REACTIVITY	Human
PRESUMED REACTIVITY	Based on 100% sequence identity, this antibody is predicted to react with Sheep, Bovine and Pig
AMOUNT	100 μ l (10 blots)
CONCENTRATION	100 μ g/ml
STORAGE/SHELF LIFE	2 - 8° C / 1 year from date of receipt
PHYSICAL STATE	Liquid
BUFFER	Tris-buffered Saline containing 0.1% BSA and 0.09% Sodium Azide
ISOTYPE	IgG
ORIGIN	USA
PRODUCTION PROCEDURES	Antibody was affinity purified using an epitope specific to CDK4 immobilized on solid support. The epitope recognized by A304-224A-M maps to a region between residue 1 to 50 of human Cyclin-Dependent Kinase 4 using the numbering given in entry NP_000066.1 (GeneID 1019).
APPLICATIONS	Centrifuge tube to remove product from lid. Optimal working dilutions should be determined experimentally by the investigator. Prepare working dilution immediately before use. Western Blot 1:1000 Immunoprecipitation Not recommended
APPLICATION NOTES	Western blot of lysates performed using standard western blot reagents and 4-20% SDS-PAGE.
ADDITIONAL INFO	https://www.bethyl.com/product/A304-224A-M Use the link above to view SDS, a current list of citations, and other product specific information.

This document certifies that this product has met all of the quality control standards defined by Bethyl Laboratories, Inc.
Eric McIntush, PhD | Chief Scientific Officer
Date: June 21, 2019



Detection of human CDK4 by western blot. *Samples:* Whole cell lysate (50 μ g) from 293T and HeLa cells. *Antibody:* Affinity purified rabbit anti-CDK4 antibody A304-224A-M used at 1:1000. *Detection:* Chemiluminescence with an exposure time of 3 minutes.