

# CHAMP1 Antibody

Rabbit Polyclonal

Antigen Affinity Purified

Protein ID NP\_115812.1

Catalog No. A304-217A

GeneID 283489

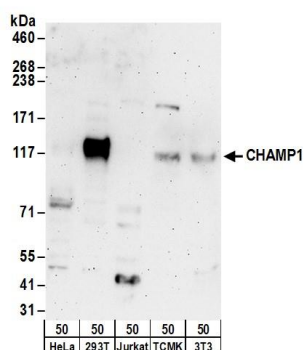
Lot No. A304-217A-1



<b>APPLICATIONS</b>	WB, IP, IHC, ICC								
<b>SPECIES REACTIVITY</b>	Human, Mouse								
<b>AMOUNT</b>	100 µl								
<b>CONCENTRATION</b>	1000 µg/ml								
<b>STORAGE/SHELF LIFE</b>	2 – 8° C / 1 year from date of receipt								
<b>PHYSICAL STATE</b>	Liquid								
<b>BUFFER</b>	Tris-citrate/phosphate buffer, pH 7 to 8 containing 0.09% Sodium Azide								
<b>ISOTYPE</b>	IgG								
<b>ORIGIN</b>	USA								
<b>PRODUCTION PROCEDURES</b>	<p>Antibody was affinity purified using an epitope specific to CHAMP1 immobilized on solid support.</p> <p>The epitope recognized by A304-217A maps to a region between residue 762 to 812 of human Chromosome Alignment Maintaining Phosphoprotein 1 using the numbering given in entry NP_115812.1 (GeneID 283489).</p> <p>Antibody concentration was determined by extinction coefficient: absorbance at 280 nm of 1.4 equals 1.0 mg of IgG.</p>								
<b>APPLICATIONS</b>	<p>Centrifuge tube to remove product from lid. Optimal working dilutions should be determined experimentally by the investigator. Prepare working dilution immediately before use.</p> <table><tr><td>Western Blot</td><td>1:1,000 – 1:5,000</td></tr><tr><td>Immunoprecipitation</td><td>2 – 10 µg/mg lysate</td></tr><tr><td>Immunohistochemistry</td><td>1:500 – 1:2,000. Epitope retrieval with citrate buffer pH 6.0 is recommended for FFPE tissue sections.</td></tr><tr><td>Immunocytochemistry</td><td>1:250 – 1:1,000</td></tr></table>	Western Blot	1:1,000 – 1:5,000	Immunoprecipitation	2 – 10 µg/mg lysate	Immunohistochemistry	1:500 – 1:2,000. Epitope retrieval with citrate buffer pH 6.0 is recommended for FFPE tissue sections.	Immunocytochemistry	1:250 – 1:1,000
Western Blot	1:1,000 – 1:5,000								
Immunoprecipitation	2 – 10 µg/mg lysate								
Immunohistochemistry	1:500 – 1:2,000. Epitope retrieval with citrate buffer pH 6.0 is recommended for FFPE tissue sections.								
Immunocytochemistry	1:250 – 1:1,000								
<b>APPLICATION NOTES</b>	<p>Western blot of immunoprecipitates performed using Normal Pig Serum (Cat. No. S100-020), Goat anti-Rabbit Light Chain HRP Conjugate (Cat. No. A120-113P) and 4-8% SDS-PAGE (link to IP-western blot protocol in Additional Info section below).</p> <p>Western blot of lysates performed using standard western blot reagents and 4-8% SDS-PAGE.</p>								
<b>IHC HUMAN CONTROLS</b>	Breast Carcinoma, Osteosarcoma, Ovarian Carcinoma, Prostate Carcinoma								
<b>ADDITIONAL INFO</b>	<p><a href="https://www.bethyl.com/product/A304-217A">https://www.bethyl.com/product/A304-217A</a></p> <p>Use the link above to view SDS, a current list of citations, and other product specific information.</p> <p>IP-western blot protocol: <a href="https://www.bethyl.com/content/protocol_IP_WB">https://www.bethyl.com/content/protocol_IP_WB</a></p>								

This document certifies that this product has met all of the quality control standards defined by Bethyl Laboratories, Inc.  
Eric McIntush, PhD | Chief Scientific Officer

Date: June 21, 2019

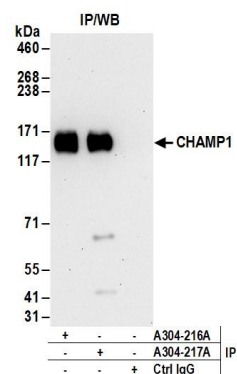


#### Detection of human and mouse CHAMP1 by western blot.

**Samples:** Whole cell lysate (50 µg) from HeLa, HEK293T, Jurkat, mouse TCMK-1, and mouse NIH 3T3 cells.

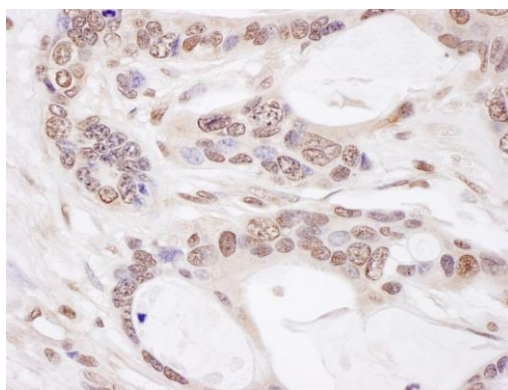
**Antibodies:** Affinity purified rabbit anti-CHAMP1 antibody A304-217A (lot A304-217A-1) used for WB at 0.4 µg/ml.

**Detection:** Chemiluminescence with an exposure time of 3 minutes.



#### Detection of human CHAMP1 by western blot of immunoprecipitates.

**Samples:** Whole cell lysate (1 mg for IP; 20% of IP loaded) from 293T cells. **Antibodies:** Affinity purified rabbit anti-CHAMP1 antibody A304-217A (lot A304-217A-1) used for IP at 6 µg/mg lysate. CHAMP1 was also immunoprecipitated by rabbit anti-CHAMP1 antibody A304-216A. For blotting immunoprecipitated CHAMP1, A304-217A was used at 1 µg/ml. **Detection:** Chemiluminescence with an exposure time of 30 seconds.



#### Detection of human CHAMP1 by immunohistochemistry.

**Sample:** FFPE section of human ovarian carcinoma.

**Antibody:** Affinity purified rabbit anti-CHAMP1 (Cat. No. A304-217A Lot1) used at a dilution of 1:1,000 (1 µg/ml).

**Detection:** DAB