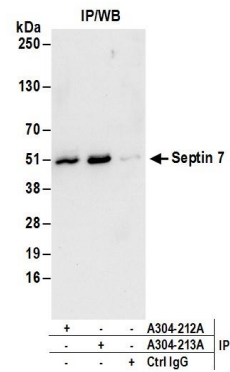


Detection of human and mouse Septin 7 by western blot.

Samples: Whole cell lysate (50 µg) from HeLa, HEK293T, Jurkat, mouse TCMK-1, and mouse NIH 3T3 cells.

Antibodies: Affinity purified rabbit anti-Septin 7 antibody A304-212A (lot A304-212A-1) used for WB at 0.1 µg/ml.

Detection: Chemiluminescence with an exposure time of 30 seconds.



Detection of human Septin 7 by western blot of immunoprecipitates.

Samples: Whole cell lysate (1 mg for IP; 20% of IP loaded) from HeLa cells. *Antibodies:* Affinity purified rabbit anti-Septin 7 antibody A304-212A (lot A304-212A-1) used for IP at 6 µg/mg lysate. Septin 7 was also immunoprecipitated by rabbit anti-Septin 7 antibody A304-213A. For blotting immunoprecipitated Septin 7, A304-212A was used at 1 µg/ml. *Detection:* Chemiluminescence with an exposure time of 10 seconds.