

RRP8 Antibody

Rabbit Polyclonal

Antigen Affinity Purified

Protein ID NP_056139.1

Catalog No. A304-202A

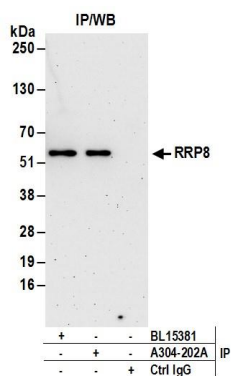
GeneID 23378

Lot No. A304-202A-1



| | |
|------------------------------|---|
| APPLICATIONS | IP |
| SPECIES REACTIVITY | Human |
| AMOUNT | 100 µl |
| CONCENTRATION | 1000 µg/ml |
| STORAGE/SHELF LIFE | 2 - 8° C / 1 year from date of receipt |
| PHYSICAL STATE | Liquid |
| BUFFER | Tris-citrate/phosphate buffer, pH 7 to 8 containing 0.09% Sodium Azide |
| ISOTYPE | IgG |
| ORIGIN | USA |
| PRODUCTION PROCEDURES | <p>Antibody was affinity purified using an epitope specific to RRP8 immobilized on solid support.</p> <p>The epitope recognized by A304-202A maps to a region between residue 406 to 456 of human Ribosomal RNA Processing 8 using the numbering given in entry NP_056139.1 (GeneID 23378).</p> <p>Antibody concentration was determined by extinction coefficient: absorbance at 280 nm of 1.4 equals 1.0 mg of IgG.</p> |
| APPLICATIONS | <p>Centrifuge tube to remove product from lid. Optimal working dilutions should be determined experimentally by the investigator. Prepare working dilution immediately before use.</p> <p>Western Blot Not recommended. Use rabbit anti-RRP8 antibody A304-201A.</p> <p>Immunoprecipitation 2 - 10 µg/mg lysate</p> |
| APPLICATION NOTES | Western blot of immunoprecipitates performed using Normal Pig Serum (Cat. No. S100-020), Goat anti-Rabbit Light Chain HRP Conjugate (Cat. No. A120-113P) and 4-20% SDS-PAGE (link to IP-western blot protocol in Additional Info section below). |
| ADDITIONAL INFO | <p>https://www.bethyl.com/product/A304-202A</p> <p>Use the link above to view SDS, a current list of citations, and other product specific information. IP-western blot protocol: https://www.bethyl.com/content/protocol_IP_WB</p> |

This document certifies that this product has met all of the quality control standards defined by Bethyl Laboratories, Inc.
Eric McIntush, PhD | Chief Scientific Officer Date: June 21, 2019



Detection of human RRP8 by western blot of immunoprecipitates. *Samples:* Whole cell lysate (1 mg for IP; 20% of IP loaded) from 293T cells. *Antibodies:* Affinity purified rabbit anti-RRP8 antibody A304-202A (lot A304-202A-1) used for IP at 6 $\mu\text{g}/\text{mg}$ lysate. RRP8 was also immunoprecipitated by rabbit anti-RRP8 antibody BL15381. For blotting immunoprecipitated RRP8, A304-201A was used at 0.1 $\mu\text{g}/\text{ml}$. *Detection:* Chemiluminescence with an exposure time of 3 minutes.