

RRP8 Antibody

Rabbit Polyclonal

Antigen Affinity Purified

Catalog No. A304-201A

Lot No. A304-201A-1

Protein ID NP_056139.1

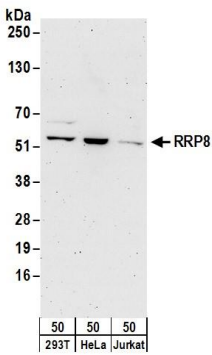
GeneID 23378



APPLICATIONS	WB				
SPECIES REACTIVITY	Human				
AMOUNT	100 µl				
CONCENTRATION	1000 µg/ml				
STORAGE/SHELF LIFE	2 – 8° C / 1 year from date of receipt				
PHYSICAL STATE	Liquid				
BUFFER	Tris-citrate/phosphate buffer, pH 7 to 8 containing 0.09% Sodium Azide				
ISOTYPE	IgG				
ORIGIN	USA				
PRODUCTION PROCEDURES	<p>Antibody was affinity purified using an epitope specific to RRP8 immobilized on solid support.</p> <p>The epitope recognized by A304-201A maps to a region between residue 1 to 50 of human Ribosomal RNA Processing 8 using the numbering given in entry NP_056139.1 (GeneID 23378).</p> <p>Antibody concentration was determined by extinction coefficient: absorbance at 280 nm of 1.4 equals 1.0 mg of IgG.</p>				
APPLICATIONS	<p>Centrifuge tube to remove product from lid. Optimal working dilutions should be determined experimentally by the investigator. Prepare working dilution immediately before use.</p> <table><tr><td>Western Blot</td><td>1:2,000 – 1:10,000</td></tr><tr><td>Immunoprecipitation</td><td>Not recommended</td></tr></table>	Western Blot	1:2,000 – 1:10,000	Immunoprecipitation	Not recommended
Western Blot	1:2,000 – 1:10,000				
Immunoprecipitation	Not recommended				
APPLICATION NOTES	Western blot of lysates performed using standard western blot reagents and 4–20% SDS-PAGE.				
ADDITIONAL INFO	<p>https://www.bethyl.com/product/A304-201A</p> <p>Use the link above to view SDS, a current list of citations, and other product specific information.</p>				

This document certifies that this product has met all of the quality control standards defined by Bethyl Laboratories, Inc.
Eric McIntush, PhD | Chief Scientific Officer

Date: June 21, 2019



Detection of human RRP8 by western blot. *Samples:* Whole cell lysate (50 µg) from 293T, HeLa, and Jurkat cells.
Antibodies: Affinity purified rabbit anti-RRP8 antibody A304-201A (lot A304-201A-1) used for WB at 0.1 µg/ml.
Detection: Chemiluminescence with an exposure time of 3 minutes.