

EZH2 Antibody

Rabbit Polyclonal

Antigen Affinity Purified

Protein ID CAA64955.1

Catalog No. A304-197A

GeneID 2146

Lot No. A304-197A-2

APPLICATIONS	WB, IP, IHC
SPECIES REACTIVITY	Human, Mouse
PRESUMED REACTIVITY	Based on 100% sequence identity, this antibody is predicted to react with Zebrafish, <i>X. laevis</i> and <i>X. tropicalis</i>
AMOUNT	100 µl
CONCENTRATION	1000 µg/ml
STORAGE/SHELF LIFE	2 – 8°C / 1 year from date of receipt
PHYSICAL STATE	Liquid
BUFFER	Tris-citrate/phosphate buffer, pH 7 to 8 containing 0.09% Sodium Azide
ISOTYPE	IgG
ORIGIN	USA
PRODUCTION PROCEDURES	Antibody was affinity purified using an epitope specific to EZH2 immobilized on solid support.

The epitope recognized by A304-197A maps to a region between residue 696 to 746 of human Enhancer of Zeste Homolog 2 using the numbering given in entry CAA64955.1 (GeneID 2146).

Antibody concentration was determined by extinction coefficient: absorbance at 280 nm of 1.4 equals 1.0 mg of IgG.

APPLICATIONS Centrifuge tube to remove product from lid. Optimal working dilutions should be determined experimentally by the investigator. Prepare working dilution immediately before use.

Western Blot 1:500 – 1:2,500

Immunoprecipitation 2 – 10 µg/mg lysate

Immunohistochemistry 1:500 – 1:2,000. Epitope retrieval with citrate buffer pH 6.0 is recommended for FFPE tissue sections.

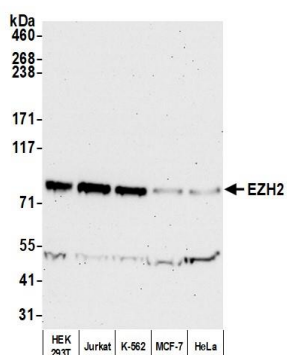
IHC HUMAN CONTROLS Ovarian Carcinoma

IHC MOUSE CONTROLS Hybridoma Tumor, Teratoma

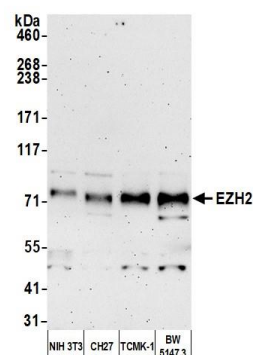
ADDITIONAL INFO <https://www.fortislifesciences.com/p/A304-197A>

Use the link above to view SDS, a current list of citations, and other product specific information.

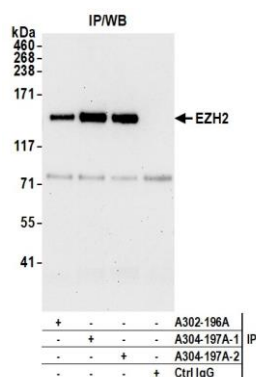
This document certifies that this product has met all of the quality control standards defined by Bethyl Laboratories, Inc.
Michael Spencer, PhD Date: July 26, 2022



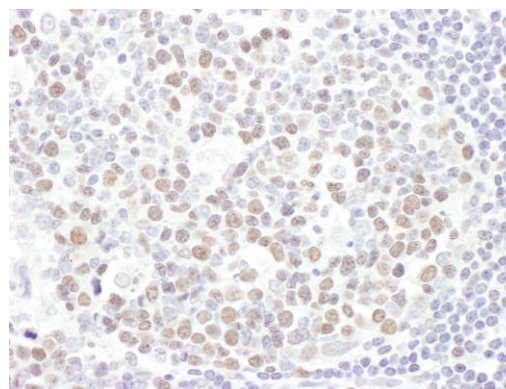
Detection of human EZH2 by western blot. *Samples:* Whole cell lysate (50 µg) from HEK293T, Jurkat, K-562, MCF-7, and HeLa cells prepared using NETN lysis buffer. *Antibody:* Affinity purified rabbit anti-EZH2 antibody (A304-197A lot 2) used for WB at 0.4 µg/ml. *Detection:* Chemiluminescence with an exposure time of 75 seconds.



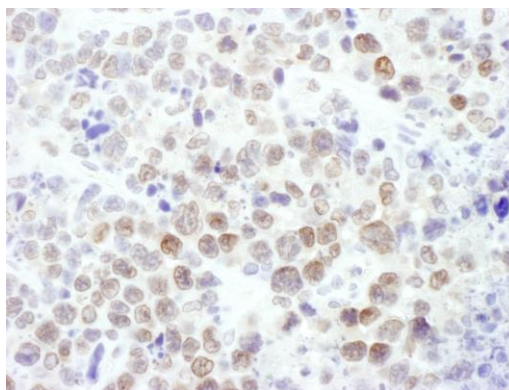
Detection of mouse EZH2 by western blot. *Samples:* Whole cell lysate (10 µg) from NIH 3T3, CH27, TCMK-1, and BW5147.3 cells prepared using NETN lysis buffer. *Antibody:* Affinity purified rabbit anti-EZH2 antibody (A304-197A lot 2) used for WB at 0.4 µg/ml. *Detection:* Chemiluminescence with an exposure time of 3 minutes.



Detection of human EZH2 by western blot of immunoprecipitates. *Samples:* Whole cell lysate (1.0 mg per IP reaction; 20% of IP loaded) from HEK293T cells prepared using NETN lysis buffer. *Antibodies:* Affinity purified rabbit anti-EZH2 antibody (A304-197A lot 2) used for IP at 6 µg per reaction. EZH2 was also immunoprecipitated by a previous lot of this antibody (A304-197A lot 1) and a second antibody against a different epitope of EZH2 (A302-196A). For blotting immunoprecipitated EZH2, A304-197A was used at 0.1 µg/ml. *Detection:* Chemiluminescence with an exposure time of 30 seconds.



Detection of human EZH2 by immunohistochemistry. *Sample:* FFPE section of human ovarian carcinoma. *Antibody:* Affinity purified rabbit anti-EZH2 (Cat. No. A304-197A Lot1) used at a dilution of 1:1,000 (1 µg/ml). *Detection:* DAB

**Detection of mouse EZH2 by immunohistochemistry.**

Sample: FFPE section of mouse plasmacytoma. *Antibody:* Affinity purified rabbit anti-EZH2 (Cat. No. A304-197A Lot1) used at a dilution of 1:1,000 (1 µg/ml). *Detection:* DAB