

METTL16 Antibody

Rabbit Polyclonal

Antigen Affinity Purified

Protein ID NP_076991.3

Catalog No. A304-192A

GeneID 79066

Lot No. A304-192A-1



APPLICATIONS	WB
SPECIES REACTIVITY	Human, Mouse
AMOUNT	100 µl
CONCENTRATION	1000 µg/ml
STORAGE/SHELF LIFE	2 – 8° C / 1 year from date of receipt
PHYSICAL STATE	Liquid
BUFFER	Tris-citrate/phosphate buffer, pH 7 to 8 containing 0.09% Sodium Azide
ISOTYPE	IgG
ORIGIN	USA
PRODUCTION PROCEDURES	Antibody was affinity purified using an epitope specific to METTL16 immobilized on solid support.

The epitope recognized by A304-192A maps to a region between residue 375 to 425 of human Methyltransferase Like 16 using the numbering given in entry NP_076991.3 (GeneID 79066).

Antibody concentration was determined by extinction coefficient: absorbance at 280 nm of 1.4 equals 1.0 mg of IgG.

APPLICATIONS Centrifuge tube to remove product from lid. Optimal working dilutions should be determined experimentally by the investigator. Prepare working dilution immediately before use.

Western Blot 1:2,000 – 1:10,000

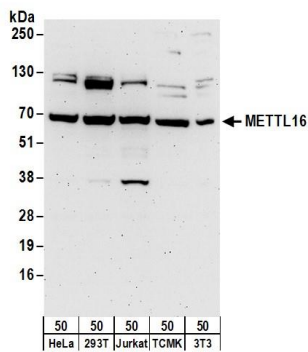
Immunoprecipitation Not recommended

APPLICATION NOTES Western blot of lysates performed using standard western blot reagents and 4–20% SDS-PAGE.

ADDITIONAL INFO <https://www.bethyl.com/product/A304-192A>

Use the link above to view SDS, a current list of citations, and other product specific information.

This document certifies that this product has met all of the quality control standards defined by Bethyl Laboratories, Inc.
Eric McIntush, PhD | Chief Scientific Officer Date: June 21, 2019



Detection of human and mouse METTL16 by western blot.
Samples: Whole cell lysate (50 µg) from HeLa, HEK293T, Jurkat, mouse TCMK-1, and mouse NIH 3T3 cells.
Antibodies: Affinity purified rabbit anti-METTL16 antibody A304-192A (lot A304-192A-1) used for WB at 0.1 µg/ml.
Detection: Chemiluminescence with an exposure time of 3 minutes.