

PRMT10 Antibody

Rabbit Polyclonal

Antigen Affinity Purified

Protein ID NP_612373.2

Catalog No. A304-190A

GeneID 90826

Lot No. A304-190A-1



APPLICATIONS	WB, IP
SPECIES REACTIVITY	Human, Rat
AMOUNT	100 µl
CONCENTRATION	1000 µg/ml
STORAGE/SHELF LIFE	2 – 8° C / 1 year from date of receipt
PHYSICAL STATE	Liquid
BUFFER	Tris-citrate/phosphate buffer, pH 7 to 8 containing 0.09% Sodium Azide
ISOTYPE	IgG
ORIGIN	USA
PRODUCTION PROCEDURES	Antibody was affinity purified using an epitope specific to PRMT10 immobilized on solid support.

The epitope recognized by A304-190A maps to a region between residue 795 to 845 of human Protein Arginine Methyltransferase 10 using the numbering given in entry NP_612373.2 (GeneID 90826).

Antibody concentration was determined by extinction coefficient: absorbance at 280 nm of 1.4 equals 1.0 mg of IgG.

APPLICATIONS Centrifuge tube to remove product from lid. Optimal working dilutions should be determined experimentally by the investigator. Prepare working dilution immediately before use.

Western Blot 1:1,000 – 1:5,000

Immunoprecipitation 2 – 10 µg/mg lysate

APPLICATION NOTES Western blot of immunoprecipitates performed using Normal Pig Serum (Cat. No. S100-020), Goat anti-Rabbit Light Chain HRP Conjugate (Cat. No. A120-113P) and 4-8% SDS-PAGE (link to IP-western blot protocol in Additional Info section below).

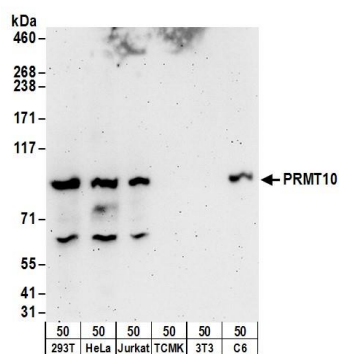
Western blot of lysates performed using standard western blot reagents and 4-8% SDS-PAGE.

ADDITIONAL INFO <https://www.bethyl.com/product/A304-190A>

Use the link above to view SDS, a current list of citations, and other product specific information.

IP-western blot protocol: https://www.bethyl.com/content/protocol_IP_WB

This document certifies that this product has met all of the quality control standards defined by Bethyl Laboratories, Inc.
Eric McIntush, PhD | Chief Scientific Officer Date: June 21, 2019

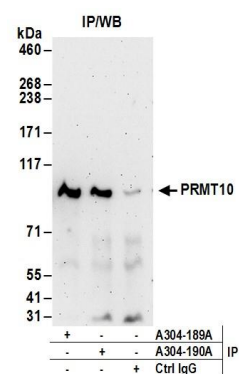


Detection of human and rat PRMT10 by western blot.

Samples: Whole cell lysate (50 µg) from 293T, HeLa, Jurkat, mouse TCMK-1, mouse NIH 3T3, and rat C6 cells.

Antibodies: Affinity purified rabbit anti-PRMT10 antibody A304-190A (lot A304-190A-1) used for WB at 0.4 µg/ml.

Detection: Chemiluminescence with an exposure time of 3 minutes.



Detection of human PRMT10 by western blot of immunoprecipitates.

Samples: Whole cell lysate (1 mg for IP; 20% of IP loaded) from 293T cells. **Antibodies:** Affinity purified rabbit anti-PRMT10 antibody A304-190A (lot A304-190A-1) used for IP at 6 µg/mg lysate. PRMT10 was also immunoprecipitated by rabbit anti-PRMT10 antibody A304-189A. For blotting immunoprecipitated PRMT10, A304-190A was used at 1 µg/ml. **Detection:** Chemiluminescence with an exposure time of 3 minutes.