

# MEPCE Antibody

Rabbit Polyclonal

Antigen Affinity Purified

Protein ID NP\_062552.2

Catalog No. A304-184A

GeneID 56257

Lot No. A304-184A-1



<b>APPLICATIONS</b>	WB, IP, IHC
<b>SPECIES REACTIVITY</b>	Human, Mouse
<b>AMOUNT</b>	100 µl
<b>CONCENTRATION</b>	1000 µg/ml
<b>STORAGE/SHELF LIFE</b>	2 – 8° C / 1 year from date of receipt
<b>PHYSICAL STATE</b>	Liquid
<b>BUFFER</b>	Tris-citrate/phosphate buffer, pH 7 to 8 containing 0.09% Sodium Azide
<b>ISOTYPE</b>	IgG
<b>ORIGIN</b>	USA
<b>PRODUCTION PROCEDURES</b>	Antibody was affinity purified using an epitope specific to MEPCE immobilized on solid support.

The epitope recognized by A304-184A maps to a region between residue 200 to 250 of human Methylphosphate Capping Enzyme using the numbering given in entry NP\_062552.2 (GeneID 56257).

Antibody concentration was determined by extinction coefficient: absorbance at 280 nm of 1.4 equals 1.0 mg of IgG.

**APPLICATIONS** Centrifuge tube to remove product from lid. Optimal working dilutions should be determined experimentally by the investigator. Prepare working dilution immediately before use.

Western Blot 1:1,000 – 1:5,000

Immunoprecipitation 2 – 10 µg/mg lysate

Immunohistochemistry 1:500 – 1:2,000. Epitope retrieval with citrate buffer pH 6.0 is recommended for FFPE tissue sections.

**APPLICATION NOTES** Western blot of immunoprecipitates performed using Normal Pig Serum (Cat. No. S100-020), Goat anti-Rabbit Light Chain HRP Conjugate (Cat. No. A120-113P) and 4-8% SDS-PAGE (link to IP-western blot protocol in Additional Info section below).

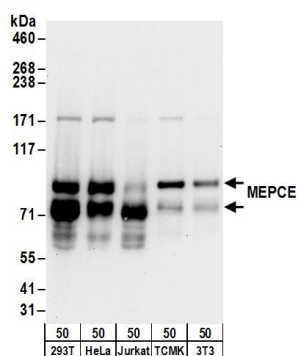
**IHC HUMAN CONTROLS** Western blot of lysates performed using standard western blot reagents and 4-8% SDS-PAGE. Breast Carcinoma, Colon Carcinoma, Ovarian Carcinoma

**ADDITIONAL INFO** <https://www.bethyl.com/product/A304-184A>

Use the link above to view SDS, a current list of citations, and other product specific information.

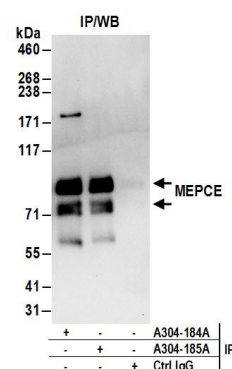
IP-western blot protocol: [https://www.bethyl.com/content/protocol\\_IP\\_WB](https://www.bethyl.com/content/protocol_IP_WB)

This document certifies that this product has met all of the quality control standards defined by Bethyl Laboratories, Inc.  
Eric McIntush, PhD | Chief Scientific Officer Date: June 21, 2019



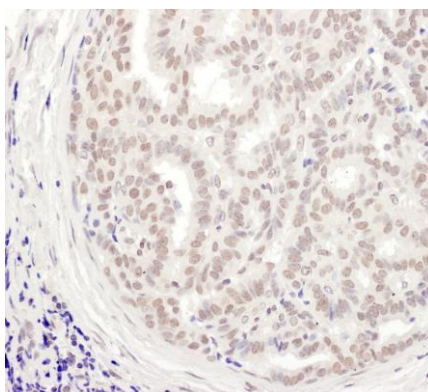
#### Detection of human and mouse MEPCE by western blot.

*Samples:* Whole cell lysate (50 µg) from 293T, HeLa, Jurkat, mouse TCMK-1, and mouse NIH 3T3 cells. *Antibodies:* Affinity purified rabbit anti-MEPCE antibody A304-184A (lot A304-184A-1) used for WB at 0.4 µg/ml. *Detection:* Chemiluminescence with an exposure time of 10 seconds.



#### Detection of human MEPCE by western blot of immunoprecipitates.

*Samples:* Whole cell lysate (1 mg for IP; 20% of IP loaded) from 293T cells. *Antibodies:* Affinity purified rabbit anti-MEPCE antibody A304-184A (lot A304-184A-1) used for IP at 6 µg/mg lysate. MEPCE was also immunoprecipitated by rabbit anti-MEPCE antibody A304-185A. For blotting immunoprecipitated MEPCE, A304-184A was used at 1 µg/ml. *Detection:* Chemiluminescence with an exposure time of 10 seconds.



#### Detection of human MEPCE by immunohistochemistry.

*Sample:* FFPE section of human breast carcinoma. *Antibody:* Affinity purified rabbit anti-MEPCE (Cat. No. A304-184A Lot1) used at a dilution of 1:1,000 (1 µg/ml). *Detection:* DAB