

CDKL5 Antibody

Rabbit Polyclonal

Antigen Affinity Purified

Protein ID NP_003150.1

Catalog No. A304-172A

GeneID 6792

Lot No. A304-172A-1



APPLICATIONS	WB, IP, IHC
SPECIES REACTIVITY	Human
AMOUNT	100 µl
CONCENTRATION	1000 µg/ml
STORAGE/SHELF LIFE	2 – 8° C / 1 year from date of receipt
PHYSICAL STATE	Liquid
BUFFER	Tris-citrate/phosphate buffer, pH 7 to 8 containing 0.09% Sodium Azide
ISOTYPE	IgG
ORIGIN	USA
PRODUCTION PROCEDURES	Antibody was affinity purified using an epitope specific to CDKL5 immobilized on solid support.

The epitope recognized by A304-172A maps to a region between residue 350 to 400 of human Cyclin-Dependent Kinase-Like 5 using the numbering given in entry NP_003150.1 (GeneID 6792).

Antibody concentration was determined by extinction coefficient: absorbance at 280 nm of 1.4 equals 1.0 mg of IgG.

APPLICATIONS Centrifuge tube to remove product from lid. Optimal working dilutions should be determined experimentally by the investigator. Prepare working dilution immediately before use.

Western Blot 1:1,000 – 1:5,000

Immunoprecipitation 2 – 10 µg/mg lysate

Immunohistochemistry 1:2,000 – 1:10,000. Epitope retrieval with citrate buffer pH 6.0 is recommended for FFPE tissue sections.

APPLICATION NOTES Western blot of immunoprecipitates performed using Normal Pig Serum (Cat. No. S100-020), Goat anti-Rabbit Light Chain HRP Conjugate (Cat. No. A120-113P) and 4-8% SDS-PAGE (link to IP-western blot protocol in Additional Info section below).

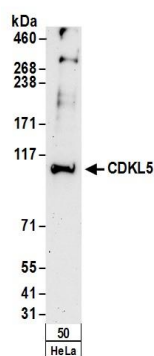
IHC HUMAN CONTROLS Western blot of lysates performed using standard western blot reagents and 4-8% SDS-PAGE. Breast Carcinoma, Prostate Carcinoma

ADDITIONAL INFO <https://www.bethyl.com/product/A304-172A>

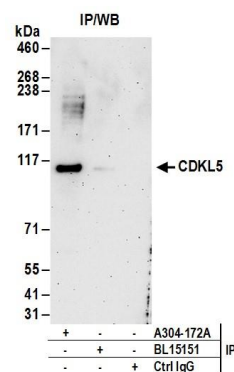
Use the link above to view SDS, a current list of citations, and other product specific information.

IP-western blot protocol: https://www.bethyl.com/content/protocol_IP_WB

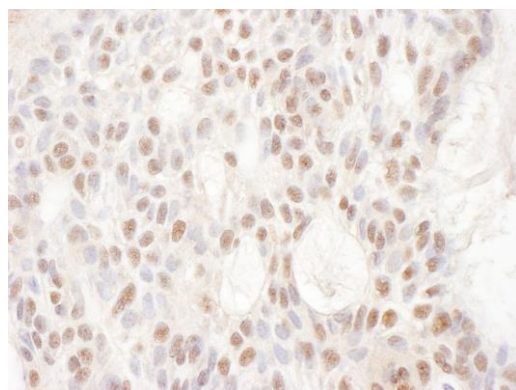
This document certifies that this product has met all of the quality control standards defined by Bethyl Laboratories, Inc.
Eric McIntush, PhD | Chief Scientific Officer Date: June 21, 2019



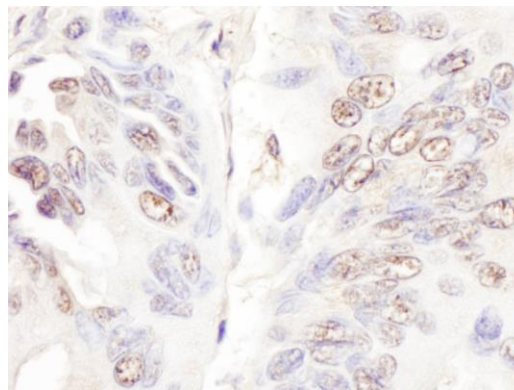
Detection of human CDKL5 by western blot. *Samples:* Whole cell lysate (50 µg) from HeLa cells. *Antibodies:* Affinity purified rabbit anti-CDKL5 antibody A304-172A (lot A304-172A-1) used for WB at 0.4 µg/ml. *Detection:* Chemiluminescence with an exposure time of 3 minutes.



Detection of human CDKL5 by western blot of immunoprecipitates. *Samples:* Whole cell lysate (1 mg for IP; 20% of IP loaded) from HeLa cells. *Antibodies:* Affinity purified rabbit anti-CDKL5 antibody A304-172A (lot A304-172A-1) used for IP at 6 µg/mg lysate. CDKL5 was inefficiently immunoprecipitated by rabbit anti-CDKL5 antibody BL15151. For blotting immunoprecipitated CDKL5, A304-172A was used at 1 µg/ml. *Detection:* Chemiluminescence with an exposure time of 3 minutes.



Detection of human CDKL5 by immunohistochemistry. *Sample:* FFPE section of human breast carcinoma. *Antibody:* Affinity purified rabbit anti- CDKL5 (Cat. No. A304-172A Lot1) used at a dilution of 1:5,000 (0.2µg/ml). *Detection:* DAB



Detection of human CDKL5 by immunohistochemistry. *Sample:* FFPE section of human lung carcinoma. *Antibody:* Affinity purified rabbit anti- CDKL5 (Cat. No. A304-172A Lot1) used at a dilution of 1:5,000 (0.2µg/ml). *Detection:* DAB