

# PSF1 Antibody

Rabbit Polyclonal

Antigen Affinity Purified

Protein ID NP\_066545.3

Catalog No. A304-169A

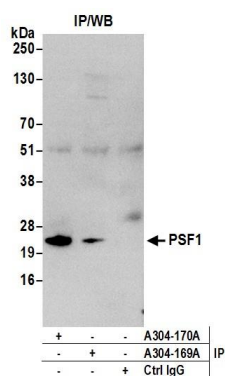
GeneID 9837

Lot No. A304-169A-2



<b>APPLICATIONS</b>	IP
<b>SPECIES REACTIVITY</b>	Human
<b>AMOUNT</b>	100 µl
<b>CONCENTRATION</b>	1000 µg/ml
<b>STORAGE/SHELF LIFE</b>	2 - 8° C / 1 year from date of receipt
<b>PHYSICAL STATE</b>	Liquid
<b>BUFFER</b>	Tris-citrate/phosphate buffer, pH 7 to 8 containing 0.09% Sodium Azide
<b>ISOTYPE</b>	IgG
<b>ORIGIN</b>	USA
<b>PRODUCTION PROCEDURES</b>	<p>Antibody was affinity purified using an epitope specific to PSF1 immobilized on solid support.</p> <p>The epitope recognized by A304-169A maps to a region between residue 50 to 100 of human GINS Complex Subunit 1 using the numbering given in entry NP_066545.3 (GeneID 9837).</p> <p>Antibody concentration was determined by extinction coefficient: absorbance at 280 nm of 1.4 equals 1.0 mg of IgG.</p>
<b>APPLICATIONS</b>	<p>Centrifuge tube to remove product from lid. Optimal working dilutions should be determined experimentally by the investigator. Prepare working dilution immediately before use.</p> <p>Western Blot                      Not recommended. Use rabbit anti-PSF1 antibody A304-170A.</p> <p>Immunoprecipitation        2 - 5 µg/mg lysate</p>
<b>APPLICATION NOTES</b>	Western blot of immunoprecipitates performed using Normal Pig Serum (Cat. No. S100-020), Goat anti-Rabbit Light Chain HRP Conjugate (Cat. No. A120-113P) and 4-20% SDS-PAGE (link to IP-western blot protocol in Additional Info section below).
<b>ADDITIONAL INFO</b>	<p><a href="https://www.bethyl.com/product/A304-169A">https://www.bethyl.com/product/A304-169A</a></p> <p>Use the link above to view SDS, a current list of citations, and other product specific information. IP-western blot protocol: <a href="https://www.bethyl.com/content/protocol_IP_WB">https://www.bethyl.com/content/protocol_IP_WB</a></p>

This document certifies that this product has met all of the quality control standards defined by Bethyl Laboratories, Inc.  
Eric McIntush, PhD | Chief Scientific Officer Date: June 21, 2019



**Detection of human PSF1 by western blot of immunoprecipitates.** *Samples:* Whole cell lysate (1.0 mg per IP reaction; 20% of IP loaded) from 293T cells prepared using NETN lysis buffer. *Antibodies:* Affinity purified rabbit anti-PSF1 antibody A304-169A (lot A304-169A-2) used for IP at 3  $\mu$ g per reaction. PSF1 was also immunoprecipitated by rabbit anti-PSF1 antibody A304-170A. For blotting immunoprecipitated PSF1, A304-169A was used at 1  $\mu$ g/ml. *Detection:* Chemiluminescence with an exposure time of 3 minutes.